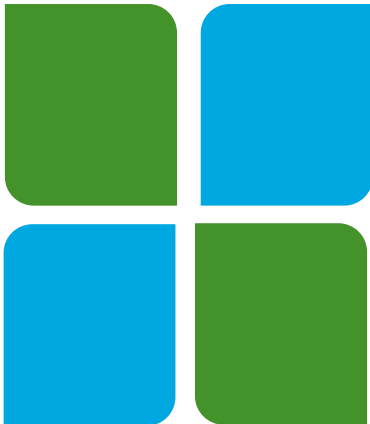


CITY OF MONTEREY PARK



User Fee Study

June 18, 2024





TABLE OF CONTENTS

TABLE OF CONTENTS	i
Executive Summary	1
User Fee Background	2
Policy Considerations.....	2
Study Objective	3
Scope of the Study	3
Aim of the Report.....	2
Project Approach and Methodology	3
Conceptual Approach.....	3
Fully Burdened Hourly Rates.....	3
Summary Steps of the Study.....	4
Allowable Costs.....	4
Methodology.....	5
Quality Control/Quality Assurance	5
Reasons for cost increases/decreases over current fees.....	5
City Staff Contributions.....	6
Monterey Park User Fees	7
Cost Recovery.....	7
Subsidization	7
Impact on Demand (Elasticity).....	8
Summary	8
General Administration	9
Analysis	9
Fire	10
Analysis	10
Library	11
Analysis	11
Recreation / Community Services	12
Analysis	12
Police	13



Analysis	13
Community Development	14
Analysis	14
Building & Safety.....	15
Analysis	15
Public Works.....	16
Analysis	16
Appendix A – Total Allowable Cost to be Recovered	17
Appendix B – Salary and Benefit Hourly Rates.....	18
Appendix C – Cost Recovery Analysis	25
Appendix D – Full Cost Calculations	50



Executive Summary

The City of Monterey Park (the “City”) engaged Willdan Financial Services (“Willdan”) to determine the full costs incurred by the City to support the various activities for which the City charges user fees. Due to the complexity and the breadth of performing a comprehensive review of fees, Willdan employed a variety of fee methodologies to identify the full costs of individual fees and program activities. This report and the appendices herein identify 100% full cost recovery for City services and the recommended level of recovery as determined through discussion with departmental staff. The recommended fees identified herein are either at or less than full cost recovery.



User Fee Background

Policy Considerations

User Fees recover costs associated with the providing specific services benefiting the user, thereby typically reducing the use of General Fund monies for such purposes.

In addition to collecting the direct cost of labor and materials associated with processing and administering user services, it is common for local governments to recover reasonable support costs. Support costs are those costs relating to a local government's central service departments that are allocable to the local government's operating departments. Central services support cost allocations were incorporated using the resulting indirect overhead percentages determined through the City's Cost Allocation Plan. This plan was used in the User Fee study to account for the burden placed upon central services by the operating departments in order to allocate a proportionate share of central service cost through the study.

As labor effort and costs associated with the provision of services fluctuate over time, a significant element in the development of any fee schedule is that it has the flexibility to remain current. Therefore, it is recommended that the City include an inflationary factor in the resolution adopting the fee schedule to allow the City Council, by resolution, to annually increase or decrease the fees.

The City may employ many different inflationary factors. The most commonly used inflator is some form of Consumer Price Index ("CPI") as it is widely well known and accepted. A similar inflator is the implicit price deflator for Gross Domestic Product ("GDP"), which is much like the CPI except that while the CPI is based on the same "basket" of goods and services every year, the price deflators' "basket" can change year to year. Since the primary factor for the cost of a City's services is usually the costs of the personnel involved, tying an inflationary factor that connects more directly to the personnel costs can also be suitable if there is a clear method, or current practice of obtaining said factor.

Each City should use an inflator that they believe works the best for their specific situation and needs. It is also recommended that the City perform this internal review annually with a comprehensive review of services and fees performed every five years, which would include adding, amending, or removing fees for programs/services.



Study Objective

As the City of Monterey Park seeks to efficiently manage limited resources and adequately respond to increased service demands, it needs a variety of tools. A User Fee Study provides assurance that the City has the best information and the best resources available to make sound decisions, fairly and legitimately set fees, maintain compliance with state law and local policies, and meet the needs of the City administration and its constituency. Given the limitations on raising revenue in local government, the City recognizes that a User Fee Study is a very cost-effective way to understand the total cost of services and identify potential fee deficiencies. Essentially, a User Fee is a payment for a requested service provided by a local government that primarily benefits an individual or group.

The total cost of each service included in this analysis is based on the full cost of providing City services; including direct salaries and benefits of City staff, direct departmental costs, and indirect costs from central service support. This study determines the full cost recovery fee for the City to provide each service; however, each fee is set at the City's discretion, up to 100% of the total cost, as specified in this report.

The principal goal of the study was to help the City determine the full cost of the services that the City provides. In addition, Willdan established a series of additional objectives including:

- Developing a rational basis for setting fees
- Identifying subsidy amount, if applicable, of each fee in the model
- Ensuring compliance with State law
- Developing an updatable and comprehensive list of fees
- Maintaining accordance with City policies and goals

The study results will help the City better understand its true costs of providing services and may serve as a basis for making informed policy decisions regarding the most appropriate fees, if any, to collect from individuals and organizations that require individualized services from the City.

Scope of the Study

The scope of this study encompasses a review and calculation of the user fees charged by the following Monterey Park departments and fee groups:

- General Administration
- Recreation / Community Services
- Fire
- Library
- Police
- Community Development
- Building and Safety
- Public Works
- Parking Fines

The study involved the identification of existing and potential new fees, fee schedule restructuring, data collection and analysis, orientation and consultation, quality control, communication and presentations, and calculation of individual service costs or program cost recovery levels.



Aim of the Report

The User Fee Study focused on the cost of City services, as City staff provide them at existing, or reasonably anticipated service levels and according to staffing needs, and policy and procedure requirements. This report provides a summary of the study results, and a general description of the approach and methods Willdan and City staff used to determine the recommended fee schedule. The report is not intended to document all the numerous discussions throughout the process, nor is it intended to provide an influential dissertation on the qualities of the utilized tools, techniques, or alternative approaches.



Project Approach and Methodology

Conceptual Approach

The basic concept of a User Fee Study is to determine the “reasonable cost” of each service provided by the City for which it charges a User Fee. The full cost of providing a service may not necessarily become the City’s fee, but it serves as the objective basis as to the maximum amount that may be collected.

The standard fee limitation established in California law for such fees is the “estimated, reasonable cost” principle. In order to maintain compliance with the letter and spirit of this standard, every component of the fee study process included a related review. The use of budget figures, time estimates, and improvement valuation clearly indicates reliance upon estimates for some data.

Fully Burdened Hourly Rates

The total cost of each service included in this analysis is primarily based on the Fully Burdened Hourly Rates (“FBHRs”) that were determined for City personnel directly involved in providing services. The FBHRs include not only personnel salary and benefits, but also any costs that are reasonably ascribable to personnel. The cost elements that are included in the calculation of fully burdened rates are:

- Salaries & benefits of personnel involved
- Operating costs applicable to fee operations
- Departmental support, supervision, and administration overhead
- Indirect City-wide overhead costs calculated through the Cost Allocation Plan

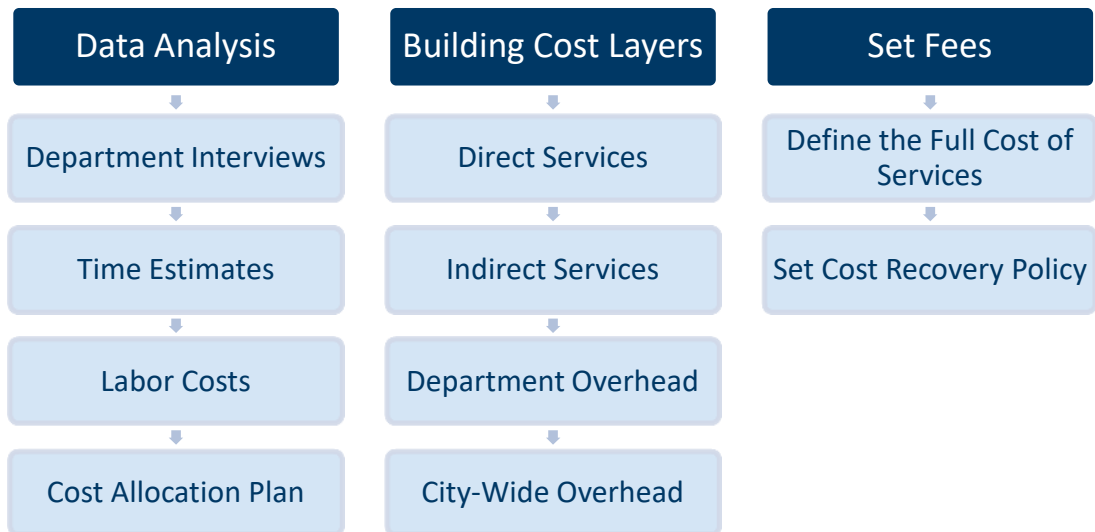
An important factor in determining the fully burdened rate is in the calculation of productive hours for personnel. This calculation takes the available workable hours in a year of 2,080 and adjusts this figure to 1,650 productive or billable hours to account for calculated or anticipated hours’ employees are involved in non-billable activities such as paid vacation, sick leave, holidays, and other considerations as necessary. Dividing the full cost, including overhead, of a position by the number of productive hours provides the FBHR.

The FBHRs are then used in conjunction with time estimates, when appropriate for how a service is provided, to calculate a fee’s cost based on the personnel and the amount of their time that is involved in providing each service.



Summary Steps of the Study

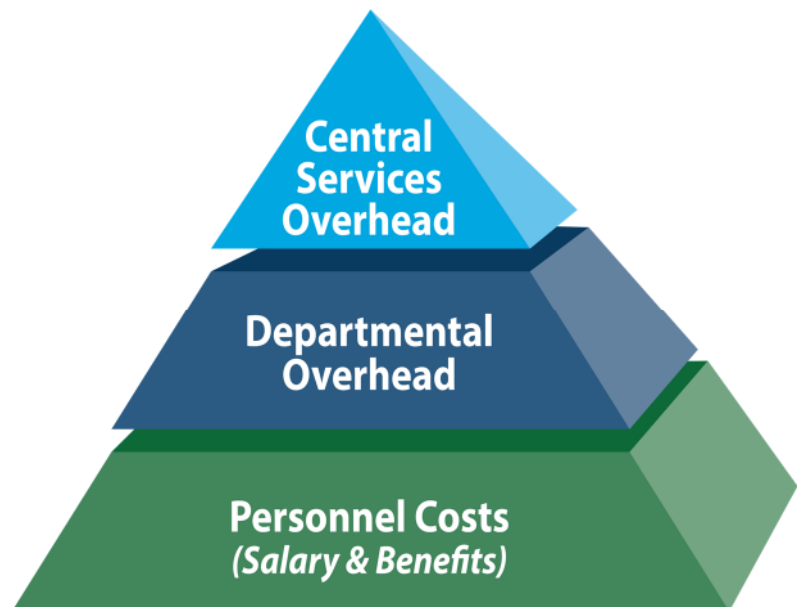
The process of the study is straightforward and simple in concept. The following list provides a summary of the study process steps:



Allowable Costs

This report identifies three types of costs that, when combined, constitute the fully burdened cost of a service (**Appendix A**). Costs are defined as direct labor, including salary and benefits, departmental overhead costs, and the City’s central services overhead, where departmental and central service overhead costs constitute support costs. These cost types are defined as follows:

- **Direct Labor (Personnel Costs):** The costs related to staff salaries for time spent directly on fee-related services.
- **Departmental Overhead:** A proportional allocation of departmental overhead costs, including operation costs such as supplies and materials that are necessary for the department to function.
- **Central Services Overhead:** These costs, as provided via the City’s Cost Allocation Plan, represent services provided by those Central Services Departments whose primary function is to support other City departments.





Methodology

The three methods of analysis for calculating fees used in this report are the:

Case Study Method (Standard Unit Cost Build-Up Approach): This approach estimates the actual labor and material costs associated with providing a unit of service to a single user. This analysis is suitable when City staff time requirements do not vary dramatically for a service, or for special projects where the time and cost requirements are easy to identify at the project's outset. Further, the method is effective in instances when a staff member from one department assists on an application, service or permit for another department on an as-needed basis. Costs are estimated based upon interviews with City staff regarding the time typically spent on tasks, a review of available records, and a time and materials analysis.

Programmatic Approach: In some instances, the underlying data is not available or varies widely, leaving a standard unit cost build-up approach impractical. In addition, market factors and policy concerns (as opposed to actual costs) tend to influence rental based fee levels more than other types of services. Willdan employed a different methodology where appropriate to fit a programs' needs and goals. Typical programmatic approach cases are facility use fees, penalties, and instances where a program cost is divided over the user base to obtain a per applicant cost for shared cost services.

Valuation Based Fees: This manner of collection is used when the valuation of the improvement can be used as a proxy for the amount of effort it would take for City staff to complete the service provided. More specifically, this approach is commonly used for certain User Fees in the Building Division. It is generally accepted that as a project's size scales up, the cost of the project increases, and the amount of effort needed to review and inspect also increases. Using a valuation-based fees provides for a system that can adjust as project sizes scale. Land is not included in the valuation.

Quality Control/Quality Assurance

All study components are interrelated, thus flawed data at any step in the process will cause the ultimate results to be inconsistent and unsound. The elements of our Quality Control process for User Fee calculations include:

- Involvement of knowledgeable City staff
- Clear instructions and guidance to City staff
- Reasonableness tests and validation
- Normalcy/expectation ranges
- Peer and Manager reviews
- Cross-checking

Reasons for cost increases/decreases over current fees

Within the fee tables in **Appendix C**, the differences are identified between the full costs calculated through the study and the fee levels currently in effect. The reasons for differences between the two can arise from a number of factors including:



-
- Previous fee levels may have been set at levels less than full cost intentionally, based on policy decisions
 - Staffing levels and the positions that complete fee and service activity may vary from when the previous costs were calculated
 - Personnel and materials costs could have increased at levels that differed from any inflationary factors used to increase fees since the last study
 - Costs that this study has identified as part of the full cost of services may not have been determined in a previous study
 - Departmental overhead and administration costs
 - Internal Service Fund charges
 - Indirect overhead from a Cost Allocation Plan, or central service overhead allocation
 - Changes in processes and procedures within a department, or the City as a whole
 - Changes in the demand for services in a City may have also changed the staffing or cost structure of departments over time

City Staff Contributions

As part of the study process, Willdan received tremendous support and cooperation from City staff, which contributed and reviewed a variety of components to the study, including:

- Budget and other cost data
- Staffing structures
- Fee and service structures, organization, and descriptions
- Direct and indirect work hours (billable/non-billable)
- Time estimates to complete work tasks
- Review of draft results and other documentation
- Suggested fees for Council consideration

A User Fee Study requires significant involvement of the managers and line staff from the departments on top of their existing workloads and competing priorities. The contributions from City staff were critical to this study. We would like to express our appreciation to the City and its staff for their assistance, professionalism, positive attitudes, helpful suggestions, responsiveness, and overall cooperation.



Monterey Park User Fees

Cost Recovery

The cost recovery models, by department/division fee type, are presented in detail in **Appendix C**. Full cost recovery is determined by summing the estimated amount of time each position (in increments of minutes or hours) spends to render a service. Time estimates for each service rendered were obtained through interviews conducted with City staff for each department/division fee included in the study. The resulting cost recovery amount represents the total cost of providing each service. The City's current fee being charged for each service, if applicable, is provided in this section, as well, for reference.

It is important to note that the time data used to determine the amount of time each employee spends assisting in the provision of the services listed on the fee schedule is essential in identifying the total cost of providing each service, and will differ from City to City depending on staffing, positions involved, experience on staff, the use of consultants, and the policies and procedures in place for each City. Specifically, in providing services, a number of employees are often involved in various aspects of the process, spending anywhere from a few minutes to several hours on the service.

The primary goal of this study was to identify the cost of City services, to provide information to help the City make informed decisions regarding the actual fee levels and charges. The responsibility of determining the final fee levels is a complicated task. City staff must consider many issues in formulating recommendations, and the City Council must consider those same issues and more in making the final decisions.

City staff assumes the responsibility to develop specific fee level recommendations to present to the City Council. Unfortunately, there are no fixed rules to guide the City, since many of the considerations are based on the unique characteristics of the City of Monterey Park, and administrative and political discretion. However, in setting the level of full cost recovery for each fee, one should consider whether the service solely benefits one end user or the general community.

Subsidization

The general concept for a user fee is that individuals (or groups) who receive a private benefit should pay 100% of the full cost of services provided to that individual (or group) that is separate from the general public. Services that are a public benefit should be funded entirely by the general fund's tax dollars. Unfortunately, for the decision makers, some services fall into the range between these two extremes.

Of course, subsidization can be an effective public policy tool, since it can be used to reduce fees to encourage certain activities (such as to ensure public safety) or allow some people to be able to afford to receive services they otherwise could not at the full cost. In addition, subsidies can be an appropriate and justifiable action, such as to allow citizens to rightfully access services, without overburdensome costs.

Despite the intent, it is important for the City and public to understand that subsidies must be paid for by another revenue source, typically the General Fund's other unobligated funds. Therefore, the general taxpayer will potentially help to fund private benefits, and/or other City services will not have available funds that are otherwise directed to cover fee subsidies.



Impact on Demand (Elasticity)

Economic principles of elasticity suggest that increased costs for services (or higher fees) will eventually curtail the demand for the services; whereas lower fees may spark an incentive to utilize the services and encourage certain actions. Either of these results may be desirable to the City. However, the level of the fees that would cause demand changes is largely unknown. The cost of service study did not attempt to evaluate the economic or behavioral impacts of higher or lower fees; nevertheless, the City should consider the potential impacts of these issues when deciding on fee levels.

Summary

The Finance Director is recommending setting user fees at 100% of the full cost identified in this study except for specific considerations where it makes sense. City and departmental goals, City Council priorities, policy initiatives, past experience, implementation issues, and other internal and external factors should influence recommendations and City Council decisions. In this case, the proper identification of additional services (new or existing services) and updating to a consistent and comprehensive fee schedule were the primary objectives of this study. The Finance Director has reviewed the full costs and identified the recommended fee levels for consideration by City Council. The attached appendices exhibit these unit fees individually.

The preceding sections provide background for each department or division and the results of this study's analysis of their fees. For the full list of each fee's analysis, refer to **Appendix C** of this report.



General Administration

General Administration includes City Clerk and Finance fees.

The City Clerk is an elected position. Employees within the City Clerk office are responsible to the electorate for keeping a complete and accurate record of City Council proceedings, maintaining official city records, supplying public information and conducting municipal elections according to the applicable laws.

The Finance Department provides centralized revenue collection, financial planning, budgeting, reporting and analysis, treasury and investment, debt management, grant accounting, purchasing, accounts payable, payroll, and audits. In addition, the Department establishes and maintains the City's administrative policies and procedures for internal controls. The Department follows Federal and State laws, rules, and regulations to prepare many mandated reports. The Finance Department oversees and maintains the City's information systems and communication systems. The Department maintains a customer service counter and serves as the central cashiering point for the City. It prepares utility billing and administers laws related to business license, utility tax, transient occupancy tax, admissions tax, and franchise tax.

Analysis

Willdan individually reviewed the services associated with General Administration. The review also consisted of an evaluation of existing services in an effort to update the fee schedule.

The analysis of the General Administration services relied primarily upon a standard unit cost build-up approach, whereby the reasonable cost of each fee occurrence was determined using staff time involved with providing the service to recover the direct cost of staff and the pro-rata share of departmental costs, including indirect costs for City Central Services. Willdan then compared the calculated full cost against the current fee amount to determine, if charged, whether the current fee is recovering the costs associated with the requested service. The analysis found that most flat rate fees are currently set below the full cost of providing the service. The department Director suggests fees be set close to full cost recovery except for continued subsidy for the photocopying fee as detailed in [Appendix C](#). As a result, there would be:

- An increase for 2 fees; and
- 7 fees would remain as currently set.



Fire

The Fire Department is organized into six divisions: Fire Administration, Fire Prevention, Emergency Operations, Emergency Medical Services, Community Risk Reduction, and Code Enforcement.

The Fire Chief is the administrative manager of the Department with the Emergency Operation Division being divided into three platoons with each managed by a Division Chief.

The Operations Division is primarily responsible for emergency response, training, vehicle fleet and Fire/EOC facilities maintenance. The Emergency Medical Services Division is responsible for operating advanced life support ambulance fleet and overseeing our Paramedic program. The Community Risk Reduction and Fire Prevention Divisions are responsible for the development and operation of the Monterey Park Emergency Operations Center, disaster preparedness needs, identifying community risks, arson investigations, life safety code enforcement, and community outreach education. The Code Enforcement Division enforces Chapter 4.30 of the Monterey Park Municipal Code (i.e., Neighborhood Preservation) and other parts of the MPMC including Chapter 21 (Zoning). The Code Enforcement Division is responsible for the City's coordination of the annual L.A. County "Weed Abatement" program. The men and women of the Fire Department take great pride in providing service to the community with character, commitment, and competency.

Analysis

Willdan individually reviewed the services and programs associated with the Fire Department. The review also consisted of an evaluation of existing services in an effort to update the fee schedule.

The analysis of Fire services relied primarily upon a standard unit cost build-up approach, whereby we determined the reasonable cost of each fee occurrence using staff time to recover the direct cost of staff and the pro-rata share of departmental costs, including indirect costs for City Central Services. Willdan then compared the calculated full cost against the current fee amount to determine, if charged, whether the current fee is recovering the costs associated with the requested service. The analysis found that most flat rate fees are currently set below the full cost of providing the service. The department Director recommends that the City increase cost recovery to 100% for Fire services as detailed in [Appendix C](#). As a result, there would be:

- an increase to 38 fees;
- 2 new fees would be added;
- 7 fees would decrease; and
- 94 fees would remain as currently set.



Library

The Library serves the entire community by maintaining a diversified collection of print and electronic books, magazines, periodicals and audio-visual materials in community languages; providing public computer access, Wi-Fi in the building, internet hotspots and laptops for home use to support digital literacy and address the digital divide; teaching English and helping residents become citizens; supporting children and families with collections, services and partnerships to encourage early literacy, school readiness and academic success, and lifelong learning; providing opportunities for personal growth and workforce development through Career Center services; and preserving Monterey Park's heritage by collecting local information and materials of historical significance.

Analysis

Willdan individually reviewed the services and programs associated with the Library. The review also consisted of an evaluation of existing services in an effort to update the fee schedule.

The analysis of Library Services relied primarily upon a standard unit cost build-up approach, whereby we determined the reasonable cost of each fee occurrence using staff time to recover the direct cost of staff and the pro-rata share of departmental costs, including indirect costs for City Central Services. Willdan then compared the calculated full cost against the current fee amount to determine, if charged, whether the current fee is recovering the costs associated with the requested service. The analysis found that most flat rate fees are currently set below the full cost of providing the service. Some rental services are also included in the Library fee schedule and under Proposition 26 can be set based on policy and market factors since there is market availability. The department Director is suggesting reasonable fee adjustments to the fee schedule, and they are detailed in [Appendix D](#). As a result, there would be:

- an increase to 6 fees;
- 1 new fee would be added;
- 9 fees would decrease; and
- 6 fees would remain as currently set.



Recreation / Community Services

The Recreation and Community Services Department is responsible for the development, implementation, coordination, and delivery of a variety of recreational and leisure time activities and programs to promote the well-being and enjoyment of life of the City's residents through the fulfillment of their recreation, cultural, social and educational needs.

In addition to traditional programs, the Recreation and Community Services Department operates Community Dial-A-Ride, volunteer program, and state licensed Child Care programs; and schedules Facility and Picnic Reservations. The department is also liaison to four City Commissions: Recreation and Parks Commission, Commission on Aging, Sister Cities Commission, and Community Participation Commission.

The Recreation and Community Services Department operates many of its programs through alternative revenue sources. Specialized Recreation classes, Aquatics, Day Care, and Reservations are partially self-supported through the levy of user fees and charges. The Dial-A-Ride Program is financed by Los Angeles County voter-approved one-quarter percent sales tax revenue.

Analysis

Willdan individually reviewed the services and programs associated with the Recreation and Community Services Department. The review also consisted of an evaluation of existing services in an effort to update the fee schedule.

The analysis of most Recreation and Community Services programs encompassed facility rentals and other recreation services. The fee for use of government owned facilities and property can be set discretionally by the City per Proposition 26 to reduce the cost to the public for related facilities costs, and because there is market availability for facility use elsewhere. The cost of acquisition, maintenance, repair, and upgrade to the City and subsequently the community is partially offset by rental or use fee revenue. These fees should be set using the knowledge of activity use for the facilities, policy desires of the City, and market factors when desirable. It is generally accepted that many Recreation programs provide a measure of public benefit to the residents and City as a whole. In addition, cities generally want to ensure that their programs and services remain affordable to the community at large, and that the programs remain competitive with surrounding jurisdictions and private businesses. Therefore, full cost recovery is typically not the primary goal of fee setting. Reasonable estimates for time for direct staff involvement on each fee were used in a cost analysis to determine direct staff fully burdened cost. The analysis found that all fees are currently set well below the direct staff's fully burdened cost of service. The department Director is suggesting reasonable fee adjustments to the fee schedule, as detailed in [Appendix C](#). As a result, there would be:

- An increase for 53 fees;
- 3 new fees would be added;
- 4 fees would remain as currently set; and
- Average fee change would be around a 17% increase and would maintain an average subsidy level of 65% for listed fees.



Police

The Monterey Park Police Department is a full-service police department providing public safety and law enforcement services to the City of Monterey Park. The Department is committed to providing professional, fair, compassionate, and dedicated law enforcement with integrity and respect. The Department coordinates with other City Departments to produce outstanding overall service to the community.

Analysis

Willdan individually reviewed the services and programs associated with the Police Department. The review also consisted of an evaluation of existing services in an effort to update the fee schedule.

The analysis of Police services relied primarily upon a standard unit cost build-up approach, whereby we determined the reasonable cost of each fee occurrence using staff time to recover the direct cost of staff and the pro-rata share of departmental costs, including indirect costs for City Central Services. Willdan then compared the calculated full cost against the current fee amount to determine, if charged, whether the current fee is recovering the costs associated with the requested service. The analysis found that most flat rate fees are currently set below the full cost of providing the service. The department Director recommends that the City increase cost recovery to 100% for Police services as detailed in [Appendix C](#). As a result, there would be:

- an increase to 14 fees;
- 2 new fees would be added;
- 11 fees would decrease;
- 11 fees and all Parking Fines would remain as currently set; and
- the average fee change would be an increase of 23%.



Community Development

The Community Development Department reviews all residential, commercial, and industrial projects in the city. The Planning Division writes and updates the City's General Plan and Specific Plans as well as Municipal Code Amendments to implement the General Plan. The Department reviews all projects for zoning compliance, processes zoning and land division applications and prepares/reviews all environmental assessments and reports. The Department also coordinates the development process with other City departments and agencies.

Analysis

Willdan individually reviewed the services and programs associated with the Community Development Department. The review also consisted of an evaluation of existing services in an effort to update the fee schedule.

The analysis of Planning services relied primarily upon a standard unit cost build-up approach, whereby the reasonable cost of each fee occurrence was determined using staff time involved in providing services to recover the direct cost of staff and the pro-rata share of departmental costs, including indirect costs for City Central Services. Willdan then compared the calculated full cost against the current fee amount to determine, if charged, whether the current fee is recovering the costs associated with the requested service. The analysis found that current fee levels are subsidizing the cost for most services to a large degree. The department Director recommends that the City increase cost recovery to 100% for Planning services as detailed in *Appendix C*. As a result, there would be:

- An increase to 44 fees;
- 9 new fees would be added;
- 5 fees would remain as currently set; and
- the average fee change would be an increase of 82%.



Building & Safety

The Building and Safety Division enforces Title 16 of the Monterey Park Municipal Code. Division personnel are also required to enforce through plan check and site inspections the California Title 24 uniform codes (e.g., California Building Standards Code), as well as State and Federal regulations relating to the construction of structures and their safety. This Division's personnel must also maintain a high degree of knowledge and expertise in the areas of new technologies of construction and materials as well as on the numerous revisions that are promulgated by the professional building industry. It is also responsible for being the liaison to the City's Modification Committee.

Analysis

Willdan individually reviewed the services and programs associated with the Building & Safety Division. The review also consisted of an evaluation of existing services in an effort to update the fee schedule.

The analysis of Building & Safety services relied primarily upon a standard unit cost build-up approach (except for fees related to the Building Permit program), whereby Willdan determined the reasonable cost of each fee occurrence using staff time to recover the direct cost of staff and pro-rata share of departmental costs, including indirect costs for County Central Services. The analysis found that services are currently set below the full cost of providing them. The department head is recommending that the City set cost recovery for fees to 100% for Building & Safety services as detailed in [Appendix C](#). As a result, there would be:

- An increase to 45 fees;
- 12 fees would decrease;
- 3 fees would remain as currently set;
- 3 new fees would be added;
- the average estimated fee change would be a decrease of 7%; and,
- Building Permits would remain at their current fee amounts per Resolution 11771.



Public Works

The Public Works Department is responsible for providing and maintaining the City's infrastructure in a manner that ensures the health, safety, and welfare of the City's residents and visitors. This includes the design, construction, repair and maintenance of public land, roadways, sidewalks, sewers, and storm drains; public buildings and structures; water production, storage and delivery facilities; the repair and maintenance of City vehicles and equipment; and transportation services. The Department is made up of five divisions: Maintenance Services, Engineering, Community Transportation, Water Utility, and Parks.

Analysis

Willdan individually reviewed the services associated with the Public Works Department. The review also consisted of an evaluation of existing services in an effort to update the fee schedule.

The analysis of the Public Works services relied primarily upon a standard unit cost build-up approach, whereby the reasonable cost of each fee occurrence was determined using staff time involved with providing the service to recover the direct cost of staff and the pro-rata share of departmental costs, including indirect costs for City Central Services. Willdan then compared the calculated full cost against the current fee amount to determine, if charged, whether the current fee is recovering the costs associated with the requested service. The analysis found a mix of fees that are currently set below and above their full cost. The department Director recommends that the City increase cost recovery to 100% for Public Works services as detailed in **Appendix C**. As a result, there would be:

- An increase for 14 fees;
- 12 fees would decrease;
- 2 fees would change to Actual Cost from flat fee;
- 11 new fees would be added;
- 10 fees would remain as currently set; and
- the average fee change would be an increase of 29%.



Appendix A – Total Allowable Cost to be Recovered

Below are the total allowable costs that may be recovered through User Fees; however, only a percentage of the total allowable cost is realized as staff not only works on services related to User Fees, but also works on an array of other City functions during the operational hours of the City. The Fiscal Year End 2023 budget was used as the cost basis for overhead calculations. The amounts listed below will not reconcile to City budgets as costs that should not be included in overhead for personnel in the application of determining fully burdened hourly rates were excluded. Examples of these costs are capital, debt, monetary transfers, contract costs, and any other costs that are charged directly to the service requestor.

City of Monterey Park, CA Overhead Rate Calculations

Department	TOTAL SALARIES & BENEFITS*	SERVICES**	INTERNAL SERVICES**	Direct Overhead %****	Indirect Allocation %*****
	A	B	C	(B+C)/A	Citywide %
ANIMAL CONTROL	143,397	3,610	49,376	37%	6%
BUILDING AND SAFETY	488,478	63,519	101,657	34%	6%
CITY CLERK	298,937	54,937	86,571	47%	0%
CITY COUNCIL	67,841	11,500	17,710	43%	0%
CITY MANAGER	501,706	41,100	136,555	35%	0%
CITY TREASURER	19,887	2,315	6,095	42%	0%
CODE ENFORCEMENT	220,041	38,990	76,631	53%	6%
ECO DEVELOPMENT	237,169	76,100	87,705	69%	6%
ENGINEERING	39,379	32,375	18,542	129%	6%
FINANCE	1,402,657	696,983	375,526	76%	0%
FIRE	8,964,458	1,081,368	2,823,593	44%	6%
HUMAN RESOURCES	274,509	159,500	47,183	75%	0%
LIBRARY	1,541,054	313,487	479,230	51%	6%
MEDIA PRODUCTION	195,559	101,118	28,113	66%	6%
PLANNING	353,346	29,650	79,134	31%	6%
POLICE	13,397,803	1,310,649	4,701,212	45%	6%
PUBLIC WORKS	353,740	124,709	151,363	78%	6%
PW - BUILDING MAINT	144,035	98,770	47,918	102%	6%
PW - PARKS	544,474	259,020	185,429	82%	6%
RECREATION & COMMUNITY SERVICES	782,638	306,310	421,231	93%	6%
RECREATION FUND	52,101	20,310	18,589	75%	6%
WATER FUND	2,433,130	488,943	2,556,983	125%	6%

* Includes all personnel related costs budgeted to the below cost centers.

** Includes all budgeted services costs to the below cost centers excluding contract and professional services

*** Includes all budgeted internal services costs to the below cost centers excluding contract and professional services

**** Direct Overhead rate is only used in the process of calculating the fully burdened hourly rates for positions to recover a pro rata share of department operating cost.

***** Indirect overhead was provided by the City from Munis upload report.



Appendix B – Salary and Benefit Hourly Rates

Below are Salary and Benefit hourly rates of staff positions. The hourly rates were used in the study to determine the full cost of each service when combined with the associated overhead rates. They include the salary and benefit costs for each position based on the City’s salary step schedule for positions as well as the appropriate benefits depending on each position’s bargaining unit. The total salary and benefits are then divided by 1,650 productive or billable hours to reduce the total 2,080 workable hours in a year to remove hours when positions are paid but not on the job such as holidays, paid leave, and sick pay. A further reduction of under 10% is made for administrative, general, or non-specific work hours. When a position is used in the study to identify direct work hours spent on a fee or service the applicable overhead rates of the operating unit (shown in [Appendix A](#)) is applied to that positions’ salary and benefit rate to determine full cost recovery. For any user fee service request that is outside the scope of the fees detailed in [Appendix C](#), or for services for which there is no fee currently set, the City can charge up to the full cost of the service by using the salary benefit rate of the positions below along with the appropriate overhead factors from [Appendix A](#). An example of a fully burdened hourly rate calculation is below.

Position	S&B Hourly Rate	Department	Direct Overhead	Indirect Overhead %	Fully Burdened Hourly Rate
	A		B	C	$A*(1+B)*(1+C)$
PERMIT TECHNICIAN II	\$46.06	BUILDING AND SAFETY	34%	6%	\$65.38
BUILDING INSPECTOR	\$57.64	BUILDING AND SAFETY	34%	6%	\$81.82



City of Monterey Park - User Fee Study

Fully Burdened Hourly Rate Calculation

Position	S&B Hourly Rate
Position Rates	
ACCOUNT CLERK	\$34.70
ACCOUNT CLERK P/T	\$24.70
ACCOUNTANT	\$42.97
CIVIL ENGINEERING ASSOCIATE	\$55.61
ADMINISTRATIVE INTERN	\$20.92
ADMINISTRATIVE SECRETARY	\$41.50
ADULT LITERACY COORDINATOR	\$56.76
ANIMAL SERVICES OFFICER	\$37.85
ANIMAL SERVICES OFFICER P/T	\$26.09
ANIMAL SERVICES SUPERVISOR	\$48.64
ASSISTANT CITY MANAGER	\$148.87
ASSISTANT DEPUTY CITY CLERK	\$45.66
ASSISTANT PLANNER	\$44.53
ASSISTANT POOL MANAGER P/T	\$23.39
ASSISTANT TO CITY MANAGER	\$74.41
ASSOCIATE PLANNER	\$58.50
ASST CITY ENGINEER/ASST DIR PW	\$89.27
ATTORNEY/INVESTIGATOR	\$82.50
AUTO SHOP TECHNICIAN	\$37.93
BUILDING INSPECTOR	\$47.58
BUILDING OFFICIAL	\$78.70
BUILDING TRADES TECHNICIAN	\$37.44
CASHIER	\$19.70
CHILD CARE ASSISTANT	\$34.70
CHILD CARE COORDINATOR	\$43.65
CHILD CARE TEACHER P/T	\$21.45
CITY LIBRARIAN	\$148.87
City Manager	\$148.87
CIVIL ENGINEER ASSISTANT	\$55.96
CIVIL ENGINEER TECHNICIAN	\$48.64
CIVIL ENGINEERING ASSOCIATE	\$55.61
CLERK TYPIST P/T	\$20.92
CODE ENFORCEMENT OFFICER	\$39.25
COMMUNICATION DISPATCHER	\$47.56
COMMUNICATION DISPATCHER P/T	\$33.06
COMMUNICATION DISPTACH TRAINEE	\$39.30



City of Monterey Park - User Fee Study

Fully Burdened Hourly Rate Calculation

Position	S&B Hourly Rate
Position Rates	
COMMUNICATION MANAGER	\$70.81
COMMUNICATIONS SUPERVISOR	\$56.76
COMMUNITY COMMUNICATIONS COORD	\$45.84
COMMUNITY MEDIA SPECIALIST P/T	\$19.70
COMMUNITY SERVICE OFFICER	\$37.79
COMMUNITY SERVICE OFFICER P/T	\$25.15
CONSUMER SERVICE REPR.	\$42.49
CONSUMER SERVICES SUPERVISOR	\$60.53
CREW LEADER	\$44.93
CRIME ANALYST	\$25.81
CROSS CONNECTION CONTRO INSP.	\$62.19
DATA ENTRY CLERK	\$19.75
DEPUTY CITY CLERK	\$61.64
DEPUTY FIRE MARSHALL	\$57.78
DIAL-A-RIDE DISPATCHER	\$37.79
DIAL-A-RIDE DRIVER	\$22.63
DIR OF COMMUNITY & ECON DEV	\$148.87
DIRECTOR OF FINANCE	\$148.87
DIRECTOR OF HR & RISK MGMT	\$148.87
DIRECTOR OF PUBLIC WORKS	\$148.87
DIRECTOR OF REC & COMM SVCS	\$148.87
DISPATCH ASSISTANT	\$25.81
DIVISION CHIEF	\$103.99
DRAFTING TECHNICIAN	\$20.92
ECONOMIC DEV SPECIALIST	\$45.24
ECONOMIC DEVELOP SPECIALIST	\$55.96
ECONOMIC DEVELOPMENT PROJ. MGR	\$71.95
ELECTIONS CLERK	\$22.99
ELECTRICIAN	\$40.86
ENGINEERING AIDE P/T	\$20.92
EQUIPMENT MECHANIC	\$37.44
EQUIPMENT SERVICE SPECIALIST	\$34.40
EVIDENCE OFFICER	\$40.80
EVIDENCE OFFICER P/T	\$25.15
FACILITY MAINT. SUPERVISOR	\$56.76
FINANCIAL ANALYST	\$56.76



City of Monterey Park - User Fee Study

Fully Burdened Hourly Rate Calculation

Position	S&B Hourly Rate
Position Rates	
FINANCIAL SERVICES MANAGER	\$90.86
FIRE CAPTAIN	\$121.36
FIRE CHIEF	\$148.87
FIRE ENGINEER	\$104.16
FIRE FIGHTER	\$90.01
FIRE FIGHTER PARAMEDIC	\$90.01
FIRE INTERN I PT	\$20.06
FIRE INTERN II	\$20.92
FIRE MARSHALL	\$77.68
FIRE PREVENTION PERMIT TECH. I	\$41.51
FIRE SAFETY SPECIALIST	\$43.78
FLEET MAINTENANCE SUPERVISOR	\$56.76
HOUSING PROGRAM & GRANT ADMIN COOR.	\$64.44
HR AND RISK MGMT MANAGER	\$90.61
HUMAN RESOURCE TECHNICIAN	\$44.98
HUMAN RESOURCES ANALYST	\$58.47
HUMAN RESOURCES ASSISTANT	\$51.66
HUMAN RESOURCES TECHNICIAN	\$34.45
INFO TECH SYSTEMS MANAGER	\$90.61
INFORMATION SYSTEMS SPECIALIST	\$65.53
INFORMATION SYSTEMS TECHNICIAN	\$54.62
INTERIM FIRE CHIEF	\$93.50
INTERIM HUMAN RESOURCE & RISK MGMT DIRECTOR	\$90.20
INTERIM WATER UTILITY MANAGER	\$45.24
IRRIGATION SPECIALIST	\$37.93
JAILER	\$39.94
JAILER P/T	\$26.21
JAILER SUPERVISOR	\$55.71
JANITOR	\$34.20
JANITOR P/T	\$19.75
JUNIOR LIFEGUARD	\$19.70
LEAD EQUIPMENT MECHANIC	\$51.68
LIBRARIAN	\$51.54
LIBRARIAN P/T	\$30.01
LIBRARY ASSISTANT (Clerk)	\$34.70
LIBRARY ASSISTANT P/T	\$22.99



City of Monterey Park - User Fee Study

Fully Burdened Hourly Rate Calculation

Position	S&B Hourly Rate
Position Rates	
LIBRARY CIRCU SVC SUPERVISOR	\$39.61
LIBRARY PAGE P/T	\$19.70
LIBRARY TECHNICIAN	\$31.66
LIFEGUARD P/T	\$20.45
LITERACY PROGRAM ADMIN	\$46.77
LOCKER ROOM ATTENDANT	\$19.70
MAINTENANCE WORKER	\$36.10
MAINTENANCE WORKER P/T	\$25.15
MANAGEMENT AIDE	\$43.87
MANAGEMENT ANALYST	\$62.04
MANAGEMENT ANALYST P/T	\$40.79
MINUTES CLERK	\$25.15
OUTREACH&HOUSING NAV COORD	\$37.79
PARK MAINTENANCE CREW LEADER	\$44.93
PARK MAINTENANCE LEAD WORKER	\$41.78
PARK MAINTENANCE WORKER	\$36.10
PARK SUPERINTEDENT	\$61.64
PARK SUPERVISOR	\$56.76
PAYROLL TECHNICIAN	\$45.86
PERMIT SYSTEMS TECHNICIAN	\$23.72
PERMIT TECHNICIAN	\$26.39
PERMIT TECHNICIAN I	\$41.51
PERMIT TECHNICIAN II	\$46.06
PLAN CHECKER	\$61.72
PLANNING INTERN P/T	\$19.70
PLANNING MANAGER	\$85.39
PLANNING TECHNICIAN	\$33.02
POL ADMINISTRATIVE ASSISTANT	\$39.30
POL RECORDS MGMT SYSTEMS TECH	\$46.06
POLICE CADET	\$19.79
POLICE CAPTAIN	\$140.38
POLICE CHIEF	\$148.87
POLICE CLERK	\$35.07
POLICE CORPORAL - HOURLY RATE	\$71.03
POLICE LIEUTENANT	\$115.73
POLICE OFFICER - HOURLY RATE	\$65.88



City of Monterey Park - User Fee Study

Fully Burdened Hourly Rate Calculation

Position	S&B Hourly Rate
Position Rates	
POLICE RECORD CLERK P/T	\$22.99
POLICE RECORDS CADET P/T	\$19.79
POLICE RECORDS INTERN	\$19.79
POLICE RECORDS MANAGEMENT TECH	\$54.20
POLICE RECORDS SUPERVISOR	\$55.71
POLICE RECORDS/DISPATCH	\$70.81
POLICE RECRUIT	\$35.30
POLICE SERGEANT	\$95.04
POOL MAINTENANCE MANAGER	\$28.22
POOL MAINTENANCE WORKER	\$55.36
POOL MANAGER P/T	\$25.16
PRINCIPAL MANAGEMENT ANALYST	\$57.82
PROGRAM COORDINATOR	\$46.66
PUBLIC WORKS INSPECTOR	\$79.07
PUBLIC WORKS MAINT. SUPERVISOR	\$56.76
PUBLIC WORKS MAINTENANCE	\$60.74
PUBLIC WORKS MAINTENANCE MGR	\$84.58
PUBLIC WORKS TECHNICIAN	\$66.94
RECREATION LEADER P/T	\$20.06
RECREATION MANAGER	\$75.57
RECREATION SUPERINTENDENT	\$40.79
RECREATION SUPERINTENDENT	\$61.64
RECREATION SUPERVISOR	\$56.76
REDEVELOPMENT PROJECT MANAGER	\$67.55
RETIRED ANNUITANT	\$51.21
SCHOOL CROSSING GUARD P/T	\$19.70
SECRETARY NON CONFIDENTIAL	\$41.51
SECRETARY TO CITY MANAGER	\$51.66
SECRETARY TO POLICE CHIEF	\$41.50
SENIOR ACCOUNT CLERK	\$30.01
SENIOR ACCOUNTANT	\$61.64
SENIOR CLERK TYPIST (NON-CONF)	\$53.20
SENIOR CLERK TYPIST P/T	\$24.70
SENIOR LIBRARIAN	\$44.92
SENIOR LIBRARY ASSISTANT (Clerk)	\$58.04
SENIOR MAINTENANCE WORKER	\$60.26



City of Monterey Park - User Fee Study

Fully Burdened Hourly Rate Calculation

Position	S&B Hourly Rate
----------	-----------------

Position Rates

SENIOR MANAGEMENT ANALYST	\$66.84
SENIOR PLANNER	\$67.55
SENIOR RECREATION LEADER	\$20.92
SENIOR WATER PROD. SYSTEM OP	\$52.94
SPECIAL EVENTS MANAGER	\$55.71
SR ACCOUNT CLERK (NON-CONF)	\$41.51
SR LIFEGRD/INSTRUCTOR P/T	\$21.92
SUPPORT SERVICES MANAGER	\$71.95
SUPPORT SERVICES SUPERVISOR	\$54.62
TRANSPORTATION PROGRAM MANAGER	\$51.22
WATER DISTRIBUTION CREW SUPER.	\$52.94
WATER DISTRIBUTION LEAD WORKER	\$45.68
WATER DISTRIBUTION SUPERVISOR	\$60.53
WATER OPERATIONS SUPERVISOR	\$60.53
WATER PRODUCTION SUPERVISOR	\$60.53
WATER PRODUCTION SYSTEM OPER.	\$45.68
WATER UTILITY MAINT WKR	\$31.50
WATER UTILITY MAINT. WORKER	\$38.57
WATER UTILITY MANAGER	\$84.58



Appendix C – Cost Recovery Analysis

The following tables provide the results of the analysis, resulting full cost recovery amount, and recommended fees. For fees and services in which the full cost, existing fee and suggested fee is listed as “NA”, the amount or percentage was not calculable based on cost data or variable fee structure. This is most common when either the current or the suggested fee includes a variable component that is not comparable on a one-to-one basis, a full cost was not calculated (for penalties, fines, market-based fees, or items not included in the study), or when there is not a current fee amount to compare against.

All services and fees analyzed as part of this study fall under one or multiple categories one through five of the exemptions defined in Proposition 26. A cost analysis was performed to calculate the estimated reasonable full cost of each service, and suggested fees are recommended at or below those amounts. Estimated reasonable full costs were calculated based on City expenditures and time estimates. Fees that include consultant or professional services include the cost of those third parties as well as administrative overhead of 25.4% which is the citywide indirect overhead rate determined in the City’s most recently completed Cost Allocation Plan from 2019.

SECTION A - GENERAL ADMINISTRATION

#	Description	Current Fee/Charge	Unit
	CITY CLERK FEES:		
	Duplication Charge		
0001	General Photocopying - related to Public Records Request	\$0.10	per page
0002	Specialized Materials (Maps, Diagrams, Reports, etc)	Actual Cost	
0003	Optical Disk	\$5.50	per disk
0004	City Clerk-Written Certification	\$3.50	
	FINANCE FEES		
	Massage Establishment		
0008	Filming Permit Special Processing Fee	\$124.00	
0009	Filming Permit Application	\$73.00	each
0010	Filming Permit	\$292.00	per day
0012	Firework Permit	\$488.00	
0016	Bingo Permit	\$50.00	each

Full Cost	Subsidy %	Suggested Fee	Fee Δ
\$1.12	91%	\$0.10	\$0
NA	NA	Actual Cost	\$0
\$20.60	42%	\$12.00	\$7
\$10.09	11%	\$9.00	\$6
NA	NA	\$124.00	\$0
NA	NA	\$73.00	\$0
NA	NA	\$292.00	\$0
NA	NA	\$488.00	\$0
NA	NA	\$50.00	\$0

* In addition to the fees listed under this Master Schedule of Fees and Charges, city would pass through any and all third party actual charges to customers

SECTION B - FIRE DEPARTMENT

#	Description	Current Fee/Charge	Unit	Notes
FIRE DEPARTMENT PLAN REVIEW				
0018	Building Plans and Fire Life Safety Plan Review	\$190.80	per hour (min. 2 hrs)	
	and Inspections	\$97.50	each	
	Plus Third Party Costs	Actual		
0019	Building/Fire LS Plan Review Resubmittal Plan	\$190.80	per hour (min. 1 hr)	
	and Inspections	\$97.50	each	
	Plus Third Party Costs	Actual		
0020	Expedite or Over-the-Counter Plan Check	\$190.80	per hour (min. 1 hr)	
	Plus Third Party Costs	Actual		
0021	As-Built/Revisions Plan Review	\$95.20	per hour (min. 1 hr)	
	Plus Third Party Costs	Actual		
0022	All Fire Protection Plan Review Resubmittals	\$95.20	per hour (min. 1 hr)	
	Plus Third Party Costs	Actual		
0023	Fire Alarm Plan Check, Fire Permit,	\$299.10	per hour (min. 1 hr)	
	Inspections	\$97.50	each	
	Plus Per Device (Fire Permit)	\$8.20	per device	
	Plus Third Party Costs	Actual		
0024	Fire Extinguisher Systems, Fire Permit,	\$299.10	per hour (min. 1 hr)	
	Inspections	\$97.50	each	
	Plus Per Device (Fire Permit)	\$8.20	per device	
	Plus Third Party Costs	Actual		
0025	Fire Sprinkler System, Fire Permit,	\$299.10	per hour (min. 1 hr)	
	Inspections	\$97.50	each	
	Plus Per Head (Fire Permit)	\$8.20	per device	
	Plus Third Party Costs	Actual		
0026	All Additional Plan Check Services, Technical Reports, Alternate Methods of Protection, Appeals, Architectural Design Review, Fire Watch Reports	\$190.80	per hour (min. 1 hr)	
	Plus Third Party Costs and Adm Processing Fee	Actual		
	Expired Plan Review and Fire Permit	\$1.00	of Permit/Plan Review	
0027	Records Management (Storage for Fire Plans)	0.12%	per valuation + 25.4% Admin	
FIRE FEES				
INSPECTIONS (Fee Plus 3rd Party Service Cost)				
<i>State Mandated Inspections</i>				
0028	Apartments	\$125.60	per floor	
0029	High-Rise Occupancy	\$190.80	per floor	
0030	Hotel or Motel Occupancy	\$190.80	per floor	
0031	Hospital Occupancy	\$190.80	per floor	
0032	Private School Occupancy	\$190.80	per inspection	
0033	Public School Occupancy	\$190.80	per inspection	
0034	Other State Mandated Occupancy	\$190.80	per inspection	
0035	State Mandated Pre-Inspection Consultation	\$97.50	per inspection (25 or fewer persons)	
0036	State Mandated Pre-Inspection Consultation	\$117.50	per inspection (26 or more persons)	
0037	Mid-Rise and Multi-Story Structures	\$190.80	per floor	

Full Cost	Subsidy %	Suggested Fee	Unit	Fee Δ
\$249.90	0%	\$249.00	per hour	\$58
\$115.80	1%	\$115.00	per hour	\$18
NA	NA	Actual		\$0
\$149.90	1%	\$149.00	per hour (min. 1 hr)	-\$42
\$115.80	1%	\$115.00	per hour	\$18
NA	NA	Actual		\$0
\$149.90	1%	\$149.00	per hour (min. 1 hr)	-\$42
NA	NA	Actual		\$0
\$149.90	1%	\$149.00	per hour (min. 1 hr)	-\$42
NA	NA	Actual		\$0
\$149.90	1%	\$149.00	per hour (min. 1 hr)	-\$42
NA	NA	Actual		\$0
\$333.23	0%	\$333.00	per hour (min. 1 hr)	\$34
\$115.80	1%	\$115.00	per hour	\$18
\$9.94	0%	\$9.90	per device	\$2
NA	NA	Actual		\$0
\$333.23	0%	\$333.00	per hour (min. 1 hr)	\$34
\$115.80	1%	\$115.00	per hour	\$18
\$9.94	0%	\$9.90	per device	\$2
NA	NA	Actual		\$0
\$333.23	0%	\$333.00	per hour (min. 1 hr)	\$34
\$115.80	1%	\$115.00	per hour	\$18
\$9.94	0%	\$9.90	per device	\$2
NA	NA	Actual		\$0
\$149.90	1%	\$149.00	per hour (min. 1 hr)	-\$42
NA	NA	Actual		\$0
NA	NA	\$1.00	of Permit/Plan Review	\$0
NA	NA	0.12%	per valuation (contract cost) + 25.4% Admin	\$0
\$134.93	1%	\$134.00	per floor	\$8
\$215.80	0%	\$215.00	per floor	\$24
\$215.80	0%	\$215.00	per floor	\$24
\$215.80	0%	\$215.00	per floor	\$24
\$215.80	0%	\$215.00	per inspection	\$0
\$215.80	0%	\$215.00	per inspection	\$24
\$215.80	0%	\$215.00	per inspection	\$24
\$141.62	0%	\$141.00	per inspection (25 or fewer persons)	\$44
\$204.52	0%	\$204.00	per inspection (26 or more persons)	\$87
\$215.80	0%	\$215.00	per floor	\$24

SECTION B - FIRE DEPARTMENT

#	Description	Current Fee/Charge	Unit	Notes
0038	Miscellaneous Inspections: Reinspection, Investigation, Fire/ Code Compliance, Occupancy Final Permit, Fire Watch	\$97.50	per inspection (+ 25.4% Admin)	
0039	Expedite and/or After Hour/Overtime Inspection	\$142.20	per hour (+ 25.4% Admin)	
	<u>Code Enforcement:</u>			
0040	Home Occupation Inspection	\$97.50	per inspection	
0041	Code Enforcement Re-inspection	\$97.50	per inspection	
	<u>Shopping Cart Enforcement:</u>			
0042	Shopping Cart Plan Review Fee	\$232.40		
0043	Shopping Cart Appeal Processing Fee	\$274.50		
0044	Shopping Cart Plan Amendments	\$232.40		
0045	Code Enforcement Appeal (Notices of Abatement)	\$439.10	per appellant	
0046	California Fire Code Permits	\$190.80	each permit	
0047	California Fire Code Permits (Construction)	\$190.80	each permit	
	<u>Business Fire Safety Fees</u>		plus 25.4% Admin	
0048	3 or Less Employees	\$61.00		
0049	4-6 Employees	\$91.60		
0050	7-10 Employees	\$122.50		
0051	11-20 Employees	\$152.90		
0052	21 & Over Employees	\$183.70		
0053	Fire Hydrant Flow Calculation	\$390.60	each	
0054	Deputy Inspector Registration Fee	\$97.50	each	
0056	Filming Details Staff Time	\$109.60	per hour per employee	
	<u>INDUSTRIAL WASTE PROGRAM</u>			
	<u>City Administration: Plus Third Party Costs</u>			
0057	Industrial Waste Program (deposit required)	\$735.00	plus 25.4% Admin	
0058	Industrial Waste Class E - Annual Permit and Inspection	\$922.00		
0059	Industrial Waste Class F (E) - Annual Permit and Inspection	\$386.00		
	Restaurant FOG Plan Review Clearance	New		
	Plus Third Party Costs	Actual		
	IW/FOG Inspection	New	Each	Plus Third Party Cost
	<u>Los Angeles County/Third Party Costs:</u>	Actual Contract Cost (directed by L.A County on or about June 30, 2022) + 25.4% Admin		
	Industrial Waste Class A - Annual Permit and Inspection	\$495.00		
	Industrial Waste Class B - Annual Permit and Inspection	\$967.00		
	Industrial Waste Class C - Annual Permit and Inspection	\$1,451.00		
	Industrial Waste Class D - Annual Permit and Inspection	\$1,923.00		

Full Cost	Subsidy %	Suggested Fee	Unit	Fee Δ
\$115.80	1%	\$115.00	per hour	\$18
\$193.25	0%	\$193.00	per hour	\$51
\$138.32	0%	\$138.00	per inspection	\$41
\$100.92	1%	\$100.00	per inspection	\$3
\$311.39	0%	\$311.00		\$79
\$311.39	0%	\$311.00		\$37
\$230.72	0%	\$230.00		-\$2
\$669.46	0%	\$669.00	per appellant	\$230
\$224.09	0%	\$224.00	each permit	\$33
\$224.09	0%	\$224.00	each permit	\$33
\$82.47	1%	\$82.00		\$0
\$115.80	1%	\$115.00		\$23
\$149.13	0%	\$149.00		\$27
\$182.47	0%	\$182.00		\$29
\$215.80	0%	\$215.00		\$31
\$90.76	1%	\$90.00	each	-\$301
\$149.90	35%	\$97.50	each	\$0
\$193.25	0%	\$193.00	per hour per employee	\$83
NA	NA	\$762 contract cost	plus 25.4% Admin	\$27
\$367.77	0%	\$367.00		-\$555
\$278.81	0%	\$278.00		-\$108
\$149.90	1%	\$149.00		NA
NA	NA	Actual		\$0
\$154.34	0%	\$154.00	Plus Third Party Cost	NA
NA	NA	Per LA County Rate		\$0
NA	NA	Per LA County Rate		\$0
NA	NA	Per LA County Rate		\$0
NA	NA	Per LA County Rate		\$0

SECTION B - FIRE DEPARTMENT

#	Description	Current Fee/Charge	Unit	Notes
	Off-Hours Inspection per hour	\$385.00		
	Inspection, for which no fee is indicated	\$495.00		
	Additional Plan Review per hour	\$181.00		
	Wastewater Sampling	\$495.00		
	<u>Citizen CPR/IAED Training Program</u>			
0060	Per Resident	\$36.45	cost of books and membership cards	
0061	Per Non-Resident	\$42.30		
	<u>Ambulance Subscription Fee (Business Membership)</u>			
0062	1-10 Employees	\$58.80		
0063	11-20 Employees	\$117.50		
0064	21-30 Employees	\$177.00		
0065	31-40 Employees	\$235.90		
0066	41-50 Employees	\$295.40		
0067	51-60 Employees	\$353.60		
0068	61-70 Employees	\$412.30		
0069	71-80 Employees	\$470.90		
0070	81-90 Employees	\$529.60		
0071	91-100 Employees	\$588.20		
0072	101-110 Employees	\$646.90		
0073	111-120 Employees	\$705.60		
0074	121-130 Employees	\$764.20		
0075	131-140 Employees	\$822.90		
0076	141+ Employees	\$882.00		
0077	Ambulance Subscription Fee (Non-Business Membership)	\$50.00		
	Ambulance Transportation Fee	Per LA County DHS Rates	plus dispatch costs	
0078	Patient Assessment Fee	\$190.00	plus dispatch costs	
0079	Electronic Documentation Fee	\$30.50		
0080	Hazardous Condition and Traffic Collision Recovery Fee	Cost	+ 25.4% Admin	
0081	Document Copy Charge Response Reports	\$8.80	per report	

Full Cost	Subsidy %	Suggested Fee	Unit	Fee Δ
NA	NA	Per LA County Rate		\$0
NA	NA	Per LA County Rate		\$0
NA	NA	Per LA County Rate		\$0
NA	NA	Per LA County Rate		\$0
NA	NA	\$36.45	cost of books and membership cards	\$0
NA	NA	\$42.30		\$0
NA	NA	\$58.80		\$0
NA	NA	\$117.50		\$0
NA	NA	\$177.00		\$0
NA	NA	\$235.90		\$0
NA	NA	\$295.40		\$0
NA	NA	\$353.60		\$0
NA	NA	\$412.30		\$0
NA	NA	\$470.90		\$0
NA	NA	\$529.60		\$0
NA	NA	\$588.20		\$0
NA	NA	\$646.90		\$0
NA	NA	\$705.60		\$0
NA	NA	\$764.20		\$0
NA	NA	\$822.90		\$0
NA	NA	\$882.00		\$0
NA	NA	\$50.00		\$0
NA	NA	Per LA County DHS Rates	plus dispatch costs	\$0
NA	NA	\$190.00	plus dispatch costs	\$0
NA	NA	\$30.50		\$0
NA	NA	Contract Cost	+ 25.4% Admin	\$0
NA	NA	\$8.80	per report	\$0

SECTION C - LIBRARY

#	Description	Current Fee/Charge	Unit
	<u>Damaged/Lost Library Material</u>		
0082	Processing fee for adding replacement copy or accompanying material	\$11.00	
0083	Accompanying Material	\$10.00	
0084	Replace Plastic Jacket	\$2.30	
0086	DVD Case	\$9.75	
0087	CD Case (single)	\$2.30	per case
0088	Bag From Children's Book/CD Set	\$2.30	per bag
0089	Audiobook/CD (multiple)/Hotspot Case	\$5.30	
0091	DVD/CD Cover (Inside Jacket)	\$6.50	
0093	Library Card Replacement	\$3.00	per card
0094	Interlibrary Loan Fees	\$6.00	per request plus charges of lending library
0095	Interlibrary Loan Photocopy	\$6.00	per pageover 20 pages (pages 1-20 free)
0097	Wifi Hotspot	Replacement Cost	
0098	Charging Cable/Laptop Bag/Mouse/Peripheral	Replacement Cost	
0099	Chromebook	Replacement Cost	
0100	Alzheimer's Kit	Replacement Cost	
	Parks Pack	Replacement Cost	
	iPad	New	
	Printing - Black & White	\$0.25	per page
	Printing - Color	\$0.50	per page
	<u>Room Rental</u>		
	Friends Room Rental		
0101	Non-Profit Adult (Based Outside Town)	\$71.60	per hour
0102	Non-Profit Adult (Based In Town)	\$7.60	per hour
0103	Non-Profit Youth Organizations	\$4.30	per hour

Full Cost	Subsidy %	Suggested Fee	Fee Δ
\$33.27	70%	\$10.00	-\$1.00
\$22.97	78%	\$5.00	-\$5.00
\$23.77	89%	\$2.50	\$0.20
\$22.85	89%	\$2.50	-\$7.25
\$22.85	89%	\$2.50	\$0.20
\$22.85	89%	\$2.50	\$0.20
\$22.85	76%	\$5.50	\$0.20
\$27.87	80%	\$5.50	-\$1.00
\$5.02	40%	\$3.00	\$0.00
\$50.99	90%	\$5.00	-\$1.00
\$50.99	90%	\$5.00	-\$1.00
NA	NA	Replacement Cost	\$0.00
NA	NA	Replacement Cost	\$0.00
NA	NA	Replacement Cost	\$0.00
NA	NA	Replacement Cost	\$0.00
NA	NA	Replacement Cost	\$0.00
NA	NA	Replacement Cost	NA
\$1.03	85%	\$0.15	-\$0.10
\$1.13	73%	\$0.30	-\$0.20
\$203.71	69%	\$63.00	-\$8.60
\$203.71	85%	\$31.50	\$23.90
\$203.71	94%	\$12.60	\$8.30

SECTION D - RECREATION / COMMUNITY SERVICES

#	Description	Current Fee/Charge	Unit
	Athletic Field Rental		
0104	Private Party	\$43.50	per hour/field
0105	Non-Profit Adult (Based Outside Town)	\$21.25	per hour/field
0106	Non-Profit Adult (Based In Town)	\$2.35	per hour/field
0107	Non-Profit Youth Organizations	\$0.30	per hour/field
	Athletic Field Lights		
0108	Private Party	\$4.75	per hour/field
0109	Non-Profit Adult (Based Outside Town)	\$2.30	per hour/field
0110	Non-Profit Adult (Based In Town)	\$0.30	per hour/field
0111	Non-Profit Youth Organizations	\$0.30	per hour/field
	Gymnasium Rental		
0112	Private Party	\$122.00	per hour
0113	Non-Profit Adult (Based Outside Town)	\$61.00	per hour
0114	Non-Profit Adult (Based In Town)	\$5.80	per hour
0115	Non-Profit Youth Organizations	\$0.60	per hour
0116	Staffing/Additional Staffing	\$24.70	per hour
	Pool Rental		
0117	Private Party	\$152.80	per hour
0118	Non-Profit Youth Organizations	\$0.90	per hour
0119	Additional Aquatics Staffing	\$24.70	per hour
	Langley Center Main Room Rental		
0120	Private Party	\$152.80	per hour
0121	Non-Profit Adult (Based Outside Town)	\$76.50	per hour
0122	Non-Profit Adult (Based In Town)	\$8.20	per hour
0123	Non-Profit Youth Organizations	\$3.50	per hour
0124	Langley Center Kitchen Facility	\$42.40	per hour
0125	Staffing/Additional Staffing	\$24.70	per hour
	Barnes Park Memorial Amphitheater		
0126	Private Party	\$152.80	per hour
0127	Non-Profit Adult (Based Outside Town)	\$76.50	per hour
0128	Non-Profit Adult (Based In Town)	\$8.20	per hour
0129	Non-Profit Youth Organizations	\$3.50	per hour
0130	Staffing/Additional Staffing	\$24.70	per hour
	Service Club House Rental		
0131	Private Party	\$152.80	per hour
0132	Non-Profit Adult (Based Outside Town)	\$76.50	per hour
0133	Non-Profit Adult (Based In Town)	\$8.20	per hour
0134	Non-Profit Youth Organizations	\$3.50	per hour
0135	Staffing/Additional Staffing	\$24.70	per hour
	Other Indoor Facilities (Community Room, Elder, Siera Vista, etc.)		
0136	Private Party	\$122.00	per hour
0137	Non-Profit Adult (Based Outside Town)	\$61.00	per hour
0138	Non-Profit Adult (Based In Town)	\$5.75	per hour

Full Cost	Subsidy %	Suggested Fee	Fee Δ
\$172.91	74%	\$45.00	\$1.50
\$172.91	87%	\$22.50	\$1.25
\$172.91	93%	\$11.25	\$8.90
\$172.91	97%	\$4.50	\$4.20
\$52.34	81%	\$10.00	\$5.25
\$52.34	90%	\$5.00	\$2.70
\$52.34	95%	\$2.50	\$2.20
\$52.34	98%	\$1.00	\$0.70
\$203.71	38%	\$126.00	\$4.00
\$203.71	69%	\$63.00	\$2.00
\$203.71	85%	\$31.50	\$25.70
\$203.71	94%	\$12.60	\$12.00
\$41.07	39%	\$25.00	\$0.30
\$217.32	27%	\$158.00	\$5.20
\$217.32	93%	\$15.80	\$14.90
\$41.86	40%	\$25.00	\$0.30
\$203.71	22%	\$158.00	\$5.20
\$203.71	61%	\$79.00	\$2.50
\$203.71	81%	\$39.50	\$31.30
\$203.71	92%	\$15.80	\$12.30
\$72.87	40%	\$44.00	\$1.60
\$41.07	39%	\$25.00	\$0.30
\$203.71	22%	\$158.00	\$5.20
\$203.71	61%	\$79.00	\$2.50
\$203.71	81%	\$39.50	\$31.30
\$203.71	92%	\$15.80	\$12.30
\$41.07	39%	\$25.00	\$0.30
\$203.71	22%	\$158.00	\$5.20
\$203.71	61%	\$79.00	\$2.50
\$203.71	81%	\$39.50	\$31.30
\$203.71	92%	\$15.80	\$12.30
\$41.07	39%	\$25.00	\$0.30
\$203.71	38%	\$126.00	\$4.00
\$203.71	69%	\$63.00	\$2.00
\$203.71	85%	\$31.50	\$25.75

SECTION D - RECREATION / COMMUNITY SERVICES

#	Description	Current Fee/Charge	Unit
0139	Non-Profit Youth Organizations	\$2.30	per hour
0140	Staffing/Additional Staffing	\$24.70	per hour
0141	Picnic Shelter	\$106.00	per shelter
0142	Picnic Shelter - Non Resident	\$126.00	per shelter
0143	Facility Clean-up Deposit (Where Applicable)	\$300-500	
	Swim Lessons		
0144	Youth: (1-3 yrs old)	\$36.30	for 5 hours of lessons
0145	Youth: (4-6 yrs old)	\$36.30	for 5 hours of lessons
0146	Youth: (7-17 yrs old)	\$36.30	for 5 hours of lessons
0147	Adult	\$36.90	for 5 hours of lessons
	Public Swim		
0148	Admission-Youth	\$2.50	2 hour swim
0149	Admission-Adult	\$3.50	2 hour swim
0150	Admission-Youth Discount Pass (20 Swims)	\$38.00	per pass
0151	Admission-Adult Discount Pass (20 Swims)	\$56.00	per pass
0152	Lap Swimming: Per Swim	\$5.25	per swim
0153	Lap Swimming: Monthly Pass	\$40.00	per month
0154	Lap Swimming: Family	\$75.00	per month
0155	Lap Swimming: Senior	\$27.00	per month
	Child Care Fees		
0156	After School Care-Resident	\$125.00	per week
0157	After School Care-Non Resident	\$133.00	per week
0158	All Day & Summer-Resident	\$172.00	per week
0159	All Day & Summer-Non Resident	\$180.00	per week
0160	Recreation Class & Activity Registration Fee	\$9.70	per registration
0161	Alcohol Consumption Permit Fee	\$115.10	
	Special Event Permit - Private Party	New	
	Special Event Permit - Non-profit	New	
	Facility Rental - El Encanto	New	per rental/hour

Full Cost	Subsidy %	Suggested Fee	Fee Δ
\$203.71	94%	\$12.60	\$10.30
\$41.07	39%	\$25.00	\$0.30
\$163.88	33%	\$110.00	\$4.00
\$163.88	21%	\$130.00	\$4.00
NA	NA	\$300-500	\$0.00
\$81.95	55%	\$37.00	\$0.70
\$81.95	55%	\$37.00	\$0.70
\$81.95	55%	\$37.00	\$0.70
\$81.95	55%	\$37.00	\$0.10
\$140.03	98%	\$2.50	\$0.00
\$140.03	98%	\$3.50	\$0.00
\$2,800.55	99%	\$39.00	\$1.00
\$2,800.55	98%	\$58.00	\$2.00
\$186.70	97%	\$5.25	\$0.00
\$5,601.10	99%	\$41.00	\$1.00
\$5,601.10	99%	\$77.00	\$2.00
\$5,601.10	100%	\$28.00	\$1.00
\$1,122.07	89%	\$129.00	\$4.00
\$1,122.07	87%	\$141.90	\$8.90
\$2,559.50	93%	\$178.00	\$6.00
\$2,559.50	92%	\$195.80	\$15.80
NA	NA	\$9.00	-\$0.70
\$799.11	69%	\$250.00	\$134.90
\$805.07	88%	\$100.00	NA
\$805.07	97%	\$25.00	NA
\$203.71	15%	\$174.00	NA

SECTION E - POLICE DEPARTMENT

#	Description	Current Fee/Charge	Unit	Notes
0162	DUI Processing	\$848.00		
	<u>Emergency Response to DUI Traffic Collision</u>			
0163	DUI Arrest	\$202.00		
0164	DUI Non-Injury	\$939.00		
0165	DUI Minor Injury	\$1,049.00		
0166	DUI Major/Fatal Injury	\$1,528.00		
0167	Vehicle Impound / Storage Release	\$237.00		
0168	Special Handling Administration Charges	\$61.00		
0169	Clearance Letter	\$102.00		
0170	Local Background Check/Recruiters	\$44.00		
0171	CAD Log Searches (address and/or time/date of incidents)	\$31.00	each	
0172	Crime Rate Report (required research redacting, writing)	\$50.00		
0173	Visa/INS Letter CW/ Report	\$103.00	each	
0174	Replace Lost Permit	\$29.00		
0175	Duplicate Citations	\$6.00		
	<u>Animal Services</u>			
	Deceased Small Pet - Picked up by Animal Services Officer	\$60.00	Contracted with LA County	
	Deceased Small Pet - Delivered to Shelter by owner	\$10.00	Dept of Animal Care & Control	
	Deceased Large Pet	\$250.00		
	License: Dogs-one year license (sterilized)	\$20.00		
	License: Cat-one year license (sterilized)	\$5.00		
	License: Dogs-one year license (unsterilized)	\$60.00		
	License: Cat-one year license (unsterilized)	\$10.00		
	License: Dogs-one year license (sterilized) military veterans with disabilities	\$7.50		
	License: Dogs-one year license (sterilized) senior discount	\$7.50		
0176	Residential and Business Alarm Permits	\$58.60		
0177	Verification of Proof of Correction on Traffic Citations	\$23.90		

Full Cost	Subsidy %	Suggested Fee	Fee Δ
\$998.83	0%	\$998.00	\$150
\$875.18	10%	\$791.58	\$590
\$998.83	0%	\$998.00	\$59
\$1,104.03	0%	\$1,104.00	\$55
\$1,877.40	0%	\$1,877.00	\$349
\$324.14	0%	\$324.00	\$87
\$33.99	3%	\$33.00	-\$28
\$60.94	2%	\$60.00	-\$42
\$33.99	3%	\$33.00	-\$11
\$60.94	2%	\$60.00	\$29
\$91.30	0%	\$91.00	\$41
\$74.42	1%	\$74.00	-\$29
\$26.91	3%	\$26.00	-\$3
\$20.52	3%	\$20.00	\$14
NA	NA	\$60.00	\$0
NA	NA	\$10.00	\$0
NA	NA	\$250.00	\$0
NA	NA	\$20.00	\$0
NA	NA	\$5.00	\$0
NA	NA	\$60.00	\$0
NA	NA	\$10.00	\$0
NA	NA	\$7.50	\$0
NA	NA	\$7.50	\$0
\$58.08	10%	\$52.03	-\$7
\$38.78	7%	\$35.88	\$12

SECTION E - POLICE DEPARTMENT

SECTION E - POLICE DEPARTMENT

#	Description	Current Fee/Charge	Unit	Notes
0178	Fingerprinting	\$32.60		
0179	Prisoner Booking Fees	\$217.00	per Court	
	<u>Sentenced Prisoners</u>			
0180	Housing	\$112.80	per 24 hours	
0181	Per Diem Rate	\$60.80	per 12 hours	
0182	Registration Fee	\$31.50		
0183	Schedule Change Fee	\$59.70		
0184	Booking & Housing of Prisoners on Los Angeles County Sheriffs Warrants and Other Arrests	\$186.60		
0185	Special Details (filming, other events)	\$109.60	per hour per employee	
0186	Concealed Weapons Permit (CCW)	\$283.00		Penal Code 26190
0187	CCW Permit Amendment	\$10.00		Penal Code 26190
0188	CCW Permit Renewal	\$25.00		Penal Code 26190
	Gun and Ammunition Dealers - First Year	New		
	Gun and Ammunition Dealers - Annual Renewal	New		

Full Cost	Subsidy %	Suggested Fee	Fee Δ
\$15.21	9%	\$13.82	-\$19
\$200.00	0%	\$200.00	-\$17
\$80.54	1%	\$80.00	-\$33
\$80.54	1%	\$80.00	\$19
\$167.81	8%	\$154.28	\$123
\$49.85	2%	\$49.00	-\$11
\$154.03	0%	\$154.00	-\$33
\$116.21	0%	\$116.00	\$6
\$601.36	12%	\$528.14	\$245
NA	NA	\$10.00	\$0
NA	NA	\$25.00	\$0
NA	NA	\$954.00	NA
NA	NA	\$577.00	NA

SECTION F - COMMUNITY DEVELOPMENT DEPARTMENT

#	Description	Current Fee/Charge	Current Unit
	<u>PLANNING</u>		
	<u>Discretionary Zoning Fees</u>		
0189	General Plan Amendment	\$7,884.00	deposit
0197	Code Amendment	\$7,516.00	
0190	Development Agreement/Specific Plan Review	\$20,398.00	deposit
0192	Zone Change (Doesn't include voter enactment)	\$7,147.00	
0193	Modification to Specific Plan	\$7,516.00	
0194	Variance: Single Family Residential	\$1,223.00	
0195	Variance: Other	\$3,061.00	
0202	Tentative Subdivision Map	\$2,915.00	plus per lot/unit fee
	Tentative Subdivision Map - per lot/unit	\$78.00	per lot/unit
0211	Lot Line Adjustment/Lot Merger	\$1,843.00	
0203	Conditional Use Permit: Commercial/SF Residential	\$3,061/\$1223	
0209	Appeal to City Council/Planning Commission	\$1,921.00	
0217	Wireless Telecommunications Facility Permit	\$2,875.00	
	Density Bonus	New	deposit
	Major Development Deposit (MPMC § 21.04)	New	deposit
	Extension of Time (discretionary)	New	
	Voter Enactment	New	
	<u>Public Hearing Fees</u>		
0207	Handling of Radius Map & Mailing	\$115.00	
0232	Publication Fee	\$190.00	per public hearing
	<u>Environmental Fees</u>		
0198	Environmental Impact Report Deposit (In-House Review)	\$9,004.00	
0199	Environmental Impact Report Deposit (Consultant)	Cost +25.4% Admin	
0200	Negative Declaration (In-House Review)	\$2,177.00	
0201	Negative Declaration (Consultant)	Cost +25.4% Admin	
0215	Categorical Exemption	\$253.00	
	<u>City Planner/Ministerial Zoning Fees</u>		
0220	Short Term Rental Permits	\$521.00	
0221	Design Review - New Construction (Less than 25,000 SF)	\$1,410.00	
0222	Design Review - New Construction (Equal or greater than 25,000 SF)	\$1,754.00	
0223	Design Review - New Single Family House	\$500.00	
0224	Design Review - Add. To Single Family House	\$500.00	
0225	Design Review - Non-Residential Remodel (w/o increase in floor area)	\$1,410.00	
0226	Design Review - Master Sign Plan	\$1,410.00	
0205	Site Plan Review	\$1,881.00	
	Design Review - Signs (New)	\$500.00	
	Design Review - Sign (Face Change)	\$57.00	
0219	Parking Study/Parking Joint Use Approval	\$5,000 plus 25.4%	deposit
0227	Administrative Use Permit	\$1,232.00	
0208	Temporary Use Permit	\$646.00	
0196	Minor Modification	\$247.00	
0228	Wireless Telecommunications Facility Permit (City Planner)	\$2,011.00	
0231	Wireless Telecommunications Facility Permit (Small Wireless Facility)	\$1,032.00	
0229	Planning Staff Review/Inspection	\$203.00	per hour

Full Cost	Subsidy %	Suggested Fee	Unit	Fee Δ
NA	NA	\$10,000.00	deposit	\$2,116
\$15,189.41	0%	\$15,189.00		\$7,673
NA	NA	\$25,000.00	deposit	\$4,602
\$10,379.82	0%	\$10,379.00		\$3,232
\$15,189.41	0%	\$15,189.00		\$7,673
\$3,560.67	0%	\$3,560.00		\$2,337
\$5,498.19	0%	\$5,498.00		\$2,437
\$5,283.94	0%	\$5,283.00	plus per lot/unit fee	\$2,368
\$183.24	0%	\$183.00	per lot/unit	\$105
\$2,914.72	0%	\$2,914.00		\$1,071
\$4,967.85	NA	\$5,188.00		\$2,127
\$5,478.72	0%	\$5,478.00		\$3,557
\$6,045.17	0%	\$6,045.00		\$3,170
NA	NA	\$10,000.00	deposit	NA
NA	NA	\$30,000.00	deposit	NA
\$5,900.66	0%	\$5,900.00		NA
NA	NA	\$30,000.00	deposit	NA
\$238.26	0%	\$238.00		\$123
\$601.50	0%	\$601.00	per public hearing	\$411
NA	NA	\$10,000.00	deposit	\$996
NA	NA	Consultant Cost +25.4% Admin		\$0
NA	NA	\$5,000.00	deposit	\$2,823
NA	NA	Consultant Cost +25.4% Admin		\$0
\$479.49	0%	\$479.00		\$226
\$793.86	0%	\$793.00		\$272
\$3,496.07	0%	\$3,496.00		\$2,086
\$7,712.41	0%	\$7,712.00		\$5,958
\$775.68	0%	\$775.00		\$275
\$713.90	0%	\$713.00		\$213
\$1,894.79	0%	\$1,894.00		\$484
\$2,243.39	0%	\$2,243.00		\$833
\$3,470.88	0%	\$3,470.00		\$1,589
\$591.40	0%	\$591.00		\$91
\$116.28	0%	\$116.00		\$59
NA	NA	\$5,000 plus 25.4% admin on consultant cost		\$0
\$3,891.86	0%	\$3,891.00		\$2,659
\$840.96	0%	\$840.00		\$194
\$1,163.36	0%	\$1,163.00		\$916
\$2,584.83	0%	\$2,584.00		\$573
\$1,741.18	0%	\$1,741.00		\$709
\$259.94	0%	\$259.00	per hour	\$56

SECTION F - COMMUNITY DEVELOPMENT DEPARTMENT

#	Description	Current Fee/Charge	Current Unit
0230	Compliance Review	\$733.00	
0212	Temporary Banner Permit	\$38.00	
0213	Yard Sale Permit	\$19.00	
0214	Landscape Plan Check Fee Deposit	\$1,219.00	deposit
0233	Planning Plan Check Fee - Single-Family Residential/Accessory Dwelling Unit	\$177.00	
0234	Home Occupation Permit	\$160.00	
0218	Zoning Verification Letter/Rebuild Letter	\$270.00	
0191	Recordable Standard Covenants	\$420.00	
0206	Extension of Time (administrative)	\$501.00	
	OTC Administrative Review: Mechanical Equipment (HVAC, Water Tanks); Fence/Walls Review; Building Code Exempt Structures	New	
	Planning Plan Check Fee - Multi-family/Commercial	New	
	Business Application Zoning Clearance	New	
	Prelim Review of Plans (SFD Addition < 2,000 SF)	New	
	Document Review (Covenants, Conditions & Restrictions, Covenants, Agreements)	New	
	Planning Review - New Accessory Dwelling Unit	\$500.00	
	Inclusionary Housing Fee	Cost +25.4% Admin	

Full Cost	Subsidy %	Suggested Fee	Unit	Fee Δ
\$2,492.86	0%	\$2,492.00		\$1,759
\$51.03	0%	\$51.00		\$13
\$35.59	2%	\$35.00		\$16
NA	NA	\$2,000.00	deposit	\$781
\$392.72	0%	\$392.00		\$215
\$252.38	0%	\$252.00		\$92
\$436.95	0%	\$436.00		\$166
\$709.09	0%	\$709.00		\$289
\$949.35	0%	\$949.00		\$448
\$76.70	1%	\$76.00		NA
\$724.34	0%	\$724.00		NA
\$152.87	1%	\$152.00		NA
\$153.93	1%	\$153.00		NA
NA	NA	Consultant Cost +25.4% Admin		NA
\$775.68	0%	\$775.00		\$275
NA	NA	Consultant Cost +25.4% Admin		\$0

Note:

If multiple deposits are required, highest deposit amount shall be collected; deposit account shall be replenished as directed by staff.

SECTION G - BUILDING AND SAFETY

#	Description	Current Fee/Charge	Unit	Notes
0240	Certificate of Occupancy: New construction	\$149.00		
0242	Building Reinspection	\$131.00		
0243	Appeal (to Appeal Board)	\$5,907.00	deposit	
	<u>Building Plan Check Fee</u>			
0244	Building Plan Check Fee, when applicable shall be	81.2% of Permit Fee		
	Minimum Building Plan Check Fee	\$284.40		
0247	Plan Check Fee for Plan Revisions (after permit is issued) min 2 hrs	\$147.00	per hour	
0249	Miscellaneous Inspections: Overtime Inspection (per hour) min 2 hrs	\$147.00	per hour	
	Plan Check Extension	New		
	<u>Electrical Permit</u>			
0250	Services 600 Volts or less & (not over 200 Amperes)	\$195.00	each	
0251	Services 600 Volts or less (201 to less than 600 Amperes)	\$222.00	each	
0252	Services 600 Volts or less & (600 or more Amperes)	\$292.00	each	
0253	Services over 600 Volts	\$292.00	each	
0254	Sub-Panel or Switchboard	\$42.00	each	
0255	Temporary Power Pole	\$71.00	each	
	Power Apparatus: Motors, Generators, Transformers, Rectifiers, Synchronous Converters, Capacitors, Air Conditioners, Heat Pumps, Other Electrical Heating Systems, Cooking or baking equipment, each. Rating in Horsepower, Kilowatts or Kilovolt Amperes:			

Full Cost	Subsidy %	Suggested Fee	Fee Δ
\$216.61	0%	\$216.61	\$68
\$134.97	0%	\$134.97	\$4
NA	NA	\$5,907.00	\$0
NA	NA	81.2% of Permit Fee	\$0
\$274.11	0%	\$274.11	-\$10
\$142.20	0%	\$142.20	-\$5
\$155.43	0%	\$155.43	\$8
NA	NA	25% of Current fee schedule Value	NA
\$204.56	0%	\$204.56	\$10
\$245.47	0%	\$245.47	\$23
\$327.30	0%	\$327.30	\$35
\$327.30	0%	\$327.30	\$35
\$81.82	0%	\$81.82	\$40
\$81.82	0%	\$81.82	\$11

SECTION G - BUILDING AND SAFETY

#	Description	Current Fee/Charge	Unit	Notes
0256	Up to 1	\$43.00	each	
0257	Over 1 up to 10	\$87.00	each	
0258	Over 11 up to 50	\$176.00	each	
0259	Over 50	\$263.00	each	
0260	Dishwasher, Disposal, Clothes Washer, Clothes Dryer, Bath Fans, Trolley Busways	\$29.00	each	
0261	Branch Circuits Including Circuit Breakers	\$13.50	each	
0262	Receptacles, Switches, Fixtures, Junction Boxes, Other Outlets	\$5.00	each	
0263	Illuminated Signs, Outline Lighting, Festoon Lighting (each transformer)	\$42.00	each	
0264	Swimming Pools, No Spas	\$58.00	each	
0265	Spa or Swimming Pools with Spas	\$117.00	each	
0266	Electrical Plan Check	81.2% of Electrical Permit		
	Minimum Electrical Plan Check Fee	\$284.40		
	Electric Vehicle Charger	New		
	Plumbing Permit			
0267	Each plumbing fixture including its water supply, trap, and drainage piping: Toilet, Urinal, Tub, Shower, or combination, Mop Sink, Laundry Tray, Kitchen Sink, Bar Sink, Lavatory, Floor Drain, Floor Sink, Dishwasher, Clothes Washer, Drinking Fountain, Rainwater Drains, P-Trap, Water Treatment Equipment	\$29.00	each fixture	
0268	Water Piping, Drain Piping, Vent Piping	\$29.00	each	
0269	Water Supply System, Drainage System, Vent System	\$87.00	each system	
0270	Backflow Preventor or Anti-Siphon Device	\$29.00	each	

Full Cost	Subsidy %	Suggested Fee	Fee Δ
\$81.82	0%	\$81.82	\$39
\$122.74	0%	\$122.74	\$36
\$163.65	0%	\$163.65	-\$12
\$204.56	0%	\$204.56	-\$58
\$81.82	0%	\$81.82	\$53
\$81.82	0%	\$81.82	\$68
\$12.27	0%	\$12.27	\$7
\$40.91	0%	\$40.91	-\$1
\$163.65	0%	\$163.65	\$106
\$184.11	0%	\$184.11	\$67
NA	NA	81.2% of Electrical Permit	\$0
\$274.11	0%	\$274.11	-\$10
\$114.52	0%	\$114.52	NA
\$40.91	0%	\$40.91	\$12
\$40.91	0%	\$40.91	\$12
\$94.10	0%	\$94.10	\$7
\$61.37	0%	\$61.37	\$0

SECTION G - BUILDING AND SAFETY

#	Description	Current Fee/Charge	Unit	Notes
0271	Gas Piping, each meter	\$58.00	per meter	
0272	Gas Outlet	\$13.00	each	
0273	Commercial Grease Trap, Commercial Grease Interceptor, Industrial Waste Interceptor, Trailer Park Trap	\$71.00	each	
0274	Sewer Connections & Sewer Extensions	\$58.00	each	
0275	Sewer Caps	\$29.00	each	
0276	Sump Pump Systems, Sewage Ejector Systems	\$71.00	each	
0277	Pool, Spa, or Combination thereof, including trap and Piping	\$117.00	each	
0278	Water Heater including water piping and vent system	\$64.00	each	
0279	Plumbing Plan Check	81.2% of Plumbing Permit		
	Minimum Plumbing Plan Check Fee	\$284.40		
	<u>Mechanical Permit</u>			
0280	Furnace or Space Heater: Up to 100M BTU	\$58.00	each	
0281	Furnace or Space Heater: Over 100M BTU	\$87.00	each	
	<u>Compressor Boiler:</u>			
0282	Up to 3HP or 100M BTU	\$58.00	each	
0283	Over 3HP or 100M BTU - Up to 15HP or 500M BTU	\$71.00	each	
0284	Over 15HP or 500M BTU - Up to 30HP or 1000M BTU	\$117.00	each	
0285	Over 30HP or 1000M BTU	\$205.00	each	
0286	Absorption Units, Evaporative Coolers	\$71.00	each	
0287	VAV Control Box	\$29.00	each	
0288	Diffusers or Registers	\$7.30	each	
0289	Vent Fan, Residential Hood, Appliance Vents, Duct Alteration	\$42.00	each	

Full Cost	Subsidy %	Suggested Fee	Fee Δ
\$81.82	0%	\$81.82	\$24
\$20.46	0%	\$20.46	\$7
\$81.82	0%	\$81.82	\$11
\$81.82	0%	\$81.82	\$24
\$40.91	0%	\$40.91	\$12
\$81.82	0%	\$81.82	\$11
\$122.74	0%	\$122.74	\$6
\$65.46	0%	\$65.46	\$1
NA	NA	81.2% of Plumbing Permit	\$0
\$274.11	0%	\$274.11	-\$10
\$81.82	0%	\$81.82	\$24
\$102.28	0%	\$102.28	\$15
\$81.82	0%	\$81.82	\$24
\$81.82	0%	\$81.82	\$11
\$122.74	0%	\$122.74	\$6
\$204.56	0%	\$204.56	\$0
\$81.82	0%	\$81.82	\$11
\$40.91	0%	\$40.91	\$12
\$12.27	0%	\$12.27	\$5
\$40.91	0%	\$40.91	-\$1

SECTION G - BUILDING AND SAFETY

SECTION G - BUILDING AND SAFETY

#	Description	Current Fee/Charge	Unit	Notes
0290	Commercial Hood including Motor & Duct	\$147.00	each	
0291	Metal Fireplace & Chimney, Oil Fired Equipment, Storage Tanks, Dipping Tanks, Appliance or Equipment Not Listed	\$58.00	each	
0293	Mechanical Plan Check	81.2% of Mechanical Permit Fee		
	Minimum Mechanical Plan Check Fee	\$284.40		
	<u>Building Permit - Building Valuation</u>			
0299	\$1,000	\$88.00		Per Reso 11771
0300	\$1,500	\$130.00		Per Reso 11771
0301	\$2,000	\$176.00		Per Reso 11771
0302	\$2,500	\$206.00		Per Reso 11771
0303	\$3,000	\$234.00		Per Reso 11771
0304	\$3,500	\$264.00		Per Reso 11771
0305	\$4,000	\$292.00		Per Reso 11771
0306	\$5,000	\$322.00		Per Reso 11771
0307	\$6,000	\$351.00		Per Reso 11771
0308	\$7,000	\$381.00		Per Reso 11771
0309	\$8,000	\$410.00		Per Reso 11771
0310	\$9,000	\$441.00		Per Reso 11771
0311	\$10,000	\$469.00		Per Reso 11771
0312	\$12,000	\$514.00		Per Reso 11771
0313	\$14,000	\$558.00		Per Reso 11771
0314	\$16,000	\$599.00		Per Reso 11771
0315	\$18,000	\$644.00		Per Reso 11771
0316	\$20,000	\$688.00		Per Reso 11771
0317	\$22,000	\$733.00		Per Reso 11771
0318	\$24,000	\$778.00		Per Reso 11771
0319	\$26,000	\$821.00		Per Reso 11771
0320	\$28,000	\$864.00		Per Reso 11771

Full Cost	Subsidy %	Suggested Fee	Fee Δ
\$163.65	0%	\$163.65	\$17
\$81.82	0%	\$81.82	\$24
NA	NA	81.2% of Mechanical Permit Fee	\$0
\$274.11	0%	\$274.11	-\$10
NA	NA	\$88.00	\$0
NA	NA	\$130.00	\$0
NA	NA	\$176.00	\$0
NA	NA	\$206.00	\$0
NA	NA	\$234.00	\$0
NA	NA	\$264.00	\$0
NA	NA	\$292.00	\$0
NA	NA	\$322.00	\$0
NA	NA	\$351.00	\$0
NA	NA	\$381.00	\$0
NA	NA	\$410.00	\$0
NA	NA	\$441.00	\$0
NA	NA	\$469.00	\$0
NA	NA	\$514.00	\$0
NA	NA	\$558.00	\$0
NA	NA	\$599.00	\$0
NA	NA	\$644.00	\$0
NA	NA	\$688.00	\$0
NA	NA	\$733.00	\$0
NA	NA	\$778.00	\$0
NA	NA	\$821.00	\$0
NA	NA	\$864.00	\$0

SECTION G - BUILDING AND SAFETY

#	Description	Current Fee/Charge	Unit	Notes
0321	\$30,000	\$910.00		Per Reso 11771
0322	\$32,000	\$951.00		Per Reso 11771
0323	\$34,000	\$994.00		Per Reso 11771
0324	\$36,000	\$1,042.00		Per Reso 11771
0325	\$38,000	\$1,084.00		Per Reso 11771
0326	\$40,000	\$1,129.00		Per Reso 11771
0327	\$42,000	\$1,170.00		Per Reso 11771
0328	\$44,000	\$1,215.00		Per Reso 11771
0329	\$46,000	\$1,260.00		Per Reso 11771
0330	\$48,000	\$1,302.00		Per Reso 11771
0331	\$50,000	\$1,348.00		Per Reso 11771
0332	\$55,000	\$1,435.00		Per Reso 11771
0333	\$60,000	\$1,523.00		Per Reso 11771
0334	\$65,000	\$1,613.00		Per Reso 11771
0335	\$70,000	\$1,700.00		Per Reso 11771
0336	\$75,000	\$1,787.00		Per Reso 11771
0337	\$80,000	\$1,875.00		Per Reso 11771
0338	\$85,000	\$1,963.00		Per Reso 11771
0339	\$90,000	\$2,051.00		Per Reso 11771
0340	\$95,000	\$2,122.00		Per Reso 11771
0341	\$100,000	\$2,197.00		Per Reso 11771
0342	Each \$1,000 valuation over \$100,000	\$13.00		Per Reso 11771
0245	<u>Energy Plan Check - Building Valuation</u>			
	\$1,000	\$101.00	per 1K sq ft	
	\$1,500	\$101.00	per 1K sq ft	
	\$2,000	\$101.00	per 1K sq ft	
	\$2,500	\$101.00	per 1K sq ft	
	\$3,000	\$101.00	per 1K sq ft	
	\$3,500	\$101.00	per 1K sq ft	
	\$4,000	\$101.00	per 1K sq ft	
	\$5,000	\$101.00	per 1K sq ft	
	\$6,000	\$101.00	per 1K sq ft	
	\$7,000	\$101.00	per 1K sq ft	
	\$8,000	\$101.00	per 1K sq ft	
	\$9,000	\$101.00	per 1K sq ft	
	\$10,000	\$101.00	per 1K sq ft	

Full Cost	Subsidy %	Suggested Fee	Fee Δ
NA	NA	\$910.00	\$0
NA	NA	\$951.00	\$0
NA	NA	\$994.00	\$0
NA	NA	\$1,042.00	\$0
NA	NA	\$1,084.00	\$0
NA	NA	\$1,129.00	\$0
NA	NA	\$1,170.00	\$0
NA	NA	\$1,215.00	\$0
NA	NA	\$1,260.00	\$0
NA	NA	\$1,302.00	\$0
NA	NA	\$1,348.00	\$0
NA	NA	\$1,435.00	\$0
NA	NA	\$1,523.00	\$0
NA	NA	\$1,613.00	\$0
NA	NA	\$1,700.00	\$0
NA	NA	\$1,787.00	\$0
NA	NA	\$1,875.00	\$0
NA	NA	\$1,963.00	\$0
NA	NA	\$2,051.00	\$0
NA	NA	\$2,122.00	\$0
NA	NA	\$2,197.00	\$0
NA	NA	\$13.00	\$0
\$9.50	0%	\$9.50	NA
\$14.03	0%	\$14.03	NA
\$19.00	0%	\$19.00	NA
\$22.24	0%	\$22.24	NA
\$25.26	0%	\$25.26	NA
\$28.50	0%	\$28.50	NA
\$31.52	0%	\$31.52	NA
\$34.76	0%	\$34.76	NA
\$37.89	0%	\$37.89	NA
\$41.13	0%	\$41.13	NA
\$44.26	0%	\$44.26	NA
\$47.60	0%	\$47.60	NA
\$50.62	0%	\$50.63	NA

SECTION G - BUILDING AND SAFETY

#	Description	Current Fee/Charge	Unit	Notes
	\$12,000	\$101.00	per 1K sq ft	
	\$14,000	\$101.00	per 1K sq ft	
	\$16,000	\$101.00	per 1K sq ft	
	\$18,000	\$101.00	per 1K sq ft	
	\$20,000	\$101.00	per 1K sq ft	
	\$22,000	\$101.00	per 1K sq ft	
	\$24,000	\$101.00	per 1K sq ft	
	\$26,000	\$101.00	per 1K sq ft	
	\$28,000	\$101.00	per 1K sq ft	
	\$30,000	\$101.00	per 1K sq ft	
	\$32,000	\$101.00	per 1K sq ft	
	\$34,000	\$101.00	per 1K sq ft	
	\$36,000	\$101.00	per 1K sq ft	
	\$38,000	\$101.00	per 1K sq ft	
	\$40,000	\$101.00	per 1K sq ft	
	\$42,000	\$101.00	per 1K sq ft	
	\$44,000	\$101.00	per 1K sq ft	
	\$46,000	\$101.00	per 1K sq ft	
	\$48,000	\$101.00	per 1K sq ft	
	\$50,000	\$101.00	per 1K sq ft	
	\$55,000	\$101.00	per 1K sq ft	
	\$60,000	\$101.00	per 1K sq ft	
	\$65,000	\$101.00	per 1K sq ft	
	\$70,000	\$101.00	per 1K sq ft	
	\$75,000	\$101.00	per 1K sq ft	
	\$80,000	\$101.00	per 1K sq ft	
	\$85,000	\$101.00	per 1K sq ft	
	\$90,000	\$101.00	per 1K sq ft	
	\$95,000	\$101.00	per 1K sq ft	
	\$100,000	\$101.00	per 1K sq ft	
	Each \$1,000 valuation over \$100,000	\$101.00	per 1K sq ft	
0246	Accessibility Plan Check - Building Valuation			
	\$1,000	\$101.00	per 1K sq ft	
	\$1,500	\$101.00	per 1K sq ft	
	\$2,000	\$101.00	per 1K sq ft	
	\$2,500	\$101.00	per 1K sq ft	

Full Cost	Subsidy %	Suggested Fee	Fee Δ
\$55.48	0%	\$55.48	NA
\$60.23	0%	\$60.23	NA
\$64.66	0%	\$64.66	NA
\$69.51	0%	\$69.52	NA
\$74.26	0%	\$74.27	NA
\$79.12	0%	\$79.13	NA
\$83.98	0%	\$83.98	NA
\$88.62	0%	\$88.62	NA
\$93.26	0%	\$93.27	NA
\$98.23	0%	\$98.23	NA
\$102.65	0%	\$102.66	NA
\$107.29	0%	\$107.30	NA
\$112.47	0%	\$112.48	NA
\$117.01	0%	\$117.01	NA
\$121.87	0%	\$121.87	NA
\$126.29	0%	\$126.30	NA
\$131.15	0%	\$131.16	NA
\$136.01	0%	\$136.01	NA
\$140.54	0%	\$140.55	NA
\$145.51	0%	\$145.51	NA
\$154.90	0%	\$154.90	NA
\$164.39	0%	\$164.40	NA
\$174.11	0%	\$174.12	NA
\$183.50	0%	\$183.51	NA
\$192.89	0%	\$192.90	NA
\$202.39	0%	\$202.40	NA
\$211.89	0%	\$211.90	NA
\$221.39	0%	\$221.40	NA
\$229.05	0%	\$229.06	NA
\$237.15	0%	\$237.16	NA
\$1.40	0%	\$1.40	NA
\$4.70	0%	\$4.70	NA
\$7.00	0%	\$7.00	NA
\$9.45	0%	\$9.45	NA
\$11.10	0%	\$11.10	NA

SECTION G - BUILDING AND SAFETY

#	Description	Current Fee/Charge	Unit	Notes
	\$3,000	\$101.00	per 1K sq ft	
	\$3,500	\$101.00	per 1K sq ft	
	\$4,000	\$101.00	per 1K sq ft	
	\$5,000	\$101.00	per 1K sq ft	
	\$6,000	\$101.00	per 1K sq ft	
	\$7,000	\$101.00	per 1K sq ft	
	\$8,000	\$101.00	per 1K sq ft	
	\$9,000	\$101.00	per 1K sq ft	
	\$10,000	\$101.00	per 1K sq ft	
	\$12,000	\$101.00	per 1K sq ft	
	\$14,000	\$101.00	per 1K sq ft	
	\$16,000	\$101.00	per 1K sq ft	
	\$18,000	\$101.00	per 1K sq ft	
	\$20,000	\$101.00	per 1K sq ft	
	\$22,000	\$101.00	per 1K sq ft	
	\$24,000	\$101.00	per 1K sq ft	
	\$26,000	\$101.00	per 1K sq ft	
	\$28,000	\$101.00	per 1K sq ft	
	\$30,000	\$101.00	per 1K sq ft	
	\$32,000	\$101.00	per 1K sq ft	
	\$34,000	\$101.00	per 1K sq ft	
	\$36,000	\$101.00	per 1K sq ft	
	\$38,000	\$101.00	per 1K sq ft	
	\$40,000	\$101.00	per 1K sq ft	
	\$42,000	\$101.00	per 1K sq ft	
	\$44,000	\$101.00	per 1K sq ft	
	\$46,000	\$101.00	per 1K sq ft	
	\$48,000	\$101.00	per 1K sq ft	
	\$50,000	\$101.00	per 1K sq ft	
	\$55,000	\$101.00	per 1K sq ft	
	\$60,000	\$101.00	per 1K sq ft	
	\$65,000	\$101.00	per 1K sq ft	
	\$70,000	\$101.00	per 1K sq ft	
	\$75,000	\$101.00	per 1K sq ft	
	\$80,000	\$101.00	per 1K sq ft	
	\$85,000	\$101.00	per 1K sq ft	

Full Cost	Subsidy %	Suggested Fee	Fee Δ
\$12.60	0%	\$12.60	NA
\$14.20	0%	\$14.20	NA
\$15.75	0%	\$15.75	NA
\$17.35	0%	\$17.35	NA
\$18.90	0%	\$18.90	NA
\$20.55	0%	\$20.55	NA
\$22.10	0%	\$22.10	NA
\$23.80	0%	\$23.80	NA
\$25.30	0%	\$25.30	NA
\$27.70	0%	\$27.70	NA
\$30.10	0%	\$30.10	NA
\$32.30	0%	\$32.30	NA
\$34.75	0%	\$34.75	NA
\$37.10	0%	\$37.10	NA
\$39.55	0%	\$39.55	NA
\$41.95	0%	\$41.95	NA
\$44.30	0%	\$44.30	NA
\$46.60	0%	\$46.60	NA
\$49.10	0%	\$49.10	NA
\$51.30	0%	\$51.30	NA
\$53.60	0%	\$53.60	NA
\$56.20	0%	\$56.20	NA
\$58.50	0%	\$58.50	NA
\$60.90	0%	\$60.90	NA
\$63.10	0%	\$63.10	NA
\$65.55	0%	\$65.55	NA
\$68.00	0%	\$68.00	NA
\$70.25	0%	\$70.25	NA
\$72.75	0%	\$72.75	NA
\$77.45	0%	\$77.45	NA
\$82.20	0%	\$82.20	NA
\$87.05	0%	\$87.05	NA
\$91.75	0%	\$91.75	NA
\$96.45	0%	\$96.45	NA
\$101.15	0%	\$101.15	NA
\$105.89	0%	\$105.90	NA

SECTION G - BUILDING AND SAFETY

#	Description	Current Fee/Charge	Unit	Notes
	\$90,000	\$101.00	per 1K sq ft	
	\$95,000	\$101.00	per 1K sq ft	
	\$100,000	\$101.00	per 1K sq ft	
	Each \$1,000 valuation over \$100,000	\$101.00	per 1K sq ft	

Full Cost	Subsidy %	Suggested Fee	Fee Δ
\$110.64	0%	\$110.65	NA
\$114.49	0%	\$114.50	NA
\$118.54	0%	\$118.55	NA
\$0.70	0%	\$0.70	NA

SECTION H - PUBLIC WORKS

#	Description	Current Fee/Charge	Unit	Notes
0346	Address Change/Additional Address (Residential)	\$947.20	each	
	Address Change/Additional Address (ADU)	\$947.20	each	
0347	Banner Permit	\$325.50	each	
0351	Encroachment Permit & Inspection Fee (Concrete, Trash Bin, Excavation, Sewer House Connection, Sewer Reconstruction)	\$463.30	each	
0351	Encroachment Permit & Inspection Fee (Food Trucks)	\$463.30	each	
	<u>Geology/Geotechnical Review</u>			
0355	Deposit for geology/geotechnical review	\$4,276.00	Initial Review + 25.4% Admin	(Cost Varied Depending on Size of Project)
	<u>Grading</u>			
	Grading Inspection Fee >1,000 acre	New	per hour	
	Grading Inspection Fee <1,000 acre	New	per hour	
	Grading Plan Check Fee	New		
0365	Plan Check Fee-Provided by Consultants	Cost	+ 25.4% Admin	
	<u>National Pollutant Discharge Elimination System (NPDES)</u>			
0366	Consultant Cost	\$2,139.00	Initial Review or 25.4% Admin Fee	
0367	City Administrative Services	\$917.00	Min \$916.05 or 25.4% of Review Cost	
0368	Housemoving Permit Fee	\$564.00	per document	
0369	Newsrack Permit Fee	\$253.00	per newsrack per year	
0370	Parcel Merge by Document	\$1,569.00	per document	
0371	Building Permit Plan Check Fee (Engineering)	\$221.00	per hour	
0371	Building Permit Plan Check Fee (Engineering) ADU	\$221.00	per hour	
0372	Public Works Improvement Plan Check - Single Family	\$221.00	per hour	

Full Cost	Subsidy %	Suggested Fee	Unit	Fee Δ
\$432.29	0%	\$432.00	each	-\$515
\$616.10	0%	\$616.00	each	-\$331
\$1,764.69	0%	\$1,764.00	each	\$1,439
\$488.48	0%	\$488.00	each	\$25
\$580.34	0%	\$580.00	each	\$117
NA	NA	Consultant Cost	Initial Review + 25.4% Admin	NA
\$198.31	0%	\$198.00	per hour	NA
\$198.31	0%	\$198.00	per hour	NA
\$888.12	0%	\$888.00	each	NA
NA	NA	Consultant Cost	+ 25.4% Admin	\$0
NA	NA	Consultant Cost +25.4% Admin		NA
NA	NA	\$917.00	Min \$916.05 or 25.4% of Consultant Review Cost	\$0
\$303.13	0%	\$303.00	per document	-\$261
\$303.13	0%	\$303.00	per newsrack per year	\$50
\$210.06	0%	\$210.00	Plus consultant cost +25.4% Admin	-\$1,359
\$353.65	0%	\$353.00	Minimum \$352 or hourly	\$132
\$529.83	0%	\$529.00	Minimum \$487 or hourly	\$308
\$444.97	0%	\$444.00	minimum \$411 or hourly	\$223

SECTION H - PUBLIC WORKS

#	Description	Current Fee/Charge	Unit	Notes
	Public Works Improvement Plan Check - Multi- Family	\$221.00	per hour	
	Public Works Improvement Plan Check - Residential Tract	\$221.00	per hour	
	Public Works Improvement Plan Check - Commercial	\$221.00	per hour	
0373	Public Works Plan Check-Provided by Consultants	Cost	+ 25.4% Admin	
0374	Public Works Improvement Inspection - Single Family	\$177.00	per hour	
	Public Works Improvement Inspection - Multi-Family	\$177.00	per hour	
	Public Works Improvement Inspection - Residential Tract	\$177.00	per hour	
	Public Works Improvement Inspection - Commercial	\$177.00	per hour	
0375	Public Works Inspection-Provided by Consultants	Cost	+ 25.4% Admin	
0377	Sewer House Connection Permit Fee (Outside City Limits)	\$978.00	each connection	
0379	Subdivision Map, Parcel Map, and Monument Map Checking			
	City Admin Fee	\$1,561.00		
	Consultant Charges	plus \$7,503.50 or 70% of L.A. County fee schedule		
0383	Subdivision CCR (Review By City Attorney)			
	City Admin Fee	+ 25.4% Admin		
	Consultant Charges	Cost		
0384	Waste and Recycling Collection Permit Application	\$591.00	per application	
0385	Transportation Permit Fee (Vehicle Code Section 35795)	\$17.00	per permit (Single Trip)	
		\$98.00	per permit (Annual Trip)	
0386	Traffic Engineering Plan Check Fee			
	City Admin Fee	+ 25.4% Admin		
	Consultant Charges	Cost		

Full Cost	Subsidy %	Suggested Fee	Unit	Fee Δ
\$889.93	0%	\$889.00	minimum \$822 or hourly	\$668
\$889.93	0%	\$889.00	minimum \$822 or hourly	\$668
\$1,334.90	0%	\$1,334.00	minimum \$1,233 or hourly	\$1,113
NA	NA	Consultant Cost	+ 25.4% Admin	\$0
\$297.47	0%	\$297.00	per hour	\$120
\$99.16	0%	\$99.00	per hour	-\$78
\$2,974.68	0%	\$2,974.00	per hour	\$2,797
\$198.31	0%	\$198.00	per hour	\$21
NA	NA	Consultant Cost	+ 25.4% Admin	\$0
NA	NA	\$978.00	each connection	\$0
\$420.12	0%	\$420.00		-\$1,141
NA	NA	Consultant Cost	+ 25.4% Admin	\$0
NA	NA	City Attorney fee		\$0
NA	NA	Cost		\$0
\$364.58	0%	\$364.00	per application	-\$227
NA	NA	\$16.00	per permit (Single Trip)	-\$1
NA	NA	\$90.00	per permit (Annual Trip)	-\$8
\$210.06	NA	+ 25.4% Admin		\$0
NA	NA	Consultant Cost		\$0

SECTION H - PUBLIC WORKS

#	Description	Current Fee/Charge	Unit	Notes
0387	Public Works Water Division Plan Check	\$221.00	per hour	
0388	Public Works Water Division Inspection	\$177.00	per hour	
0389	During Extreme Weather, Plastic Sheeting after the First Roll	\$120.90	Additional Rolls	(First Roll of Sheeting is free)
	Street Vendor Fee (Peddler)	New		
	Water Service Installation	New	Deposit	Consultant +25% Admin
	Backflow Annual Inspection & Compliance	New		
	Construction Meter Fee	New	Deposit	Rental Fee + \$2,500 Deposit + Water Use
	Permit Parking Review	New	each	
	Meter Testing 3/4" - 1"	New	each	Cost + staff time
	Meter Testing 1.5" - 2"	New	each	Cost + staff time
	Meter Testing 3" or larger	New	each	Cost + staff time + consultant time
	Fire Hydrant Flow Test	\$403.00	each	

Full Cost	Subsidy %	Suggested Fee	Unit	Fee Δ
\$117.45	0%	\$117.00	per hour	-\$104
\$117.45	0%	\$117.00	per hour	-\$60
\$128.65	1%	\$128.00	Additional Rolls	\$7
\$255.37	0%	\$255.00		NA
NA	NA	Consultant Cost	+ 25.4% Admin	NA
\$117.45	0%	\$117.00		NA
\$234.90	0%	\$234.00	Staff Time+ \$1250 Deposit + Water Use	NA
\$2,923.46	0%	\$2,923.00		NA
\$225.50	0%	\$225.00		NA
\$285.50	0%	\$285.00		NA
\$405.50	0%	\$405.00	+ Consultant T&M	NA
\$389.81	0%	\$389.00		-\$14



Appendix D – Full Cost Calculations

The tables below contain the time data used in hours (**figures in the green cells, the without \$ symbol**) to calculate the full cost for each service as listed in Appendix C. The fully burdened hourly rate (**figures with the \$ symbol**) for each position is listed below the position title at the top of each page, and when multiplied by the time data in each row it produces the full cost. An example of how the calculation is made is below (refer to appendix B for the calculation of fully burdened hourly rates).

SECTION G - BUILDING AND SAFETY			BUILDING AND SAFETY	BUILDING AND SAFETY	
#	Description	Current Fee/Charge	PERMIT TECHNICIAN II	BUILDING INSPECTOR	Full Cost
0240	Certificate of Occupancy: New construction	\$149.00	3.00	0.25	\$216.61

Position	Fully Hourly Rate	Hours	Cost per Position
PERMIT TECHNICIAN II	\$65.38	3.00	\$196.15
BUILDING INSPECTOR	\$81.82	0.25	\$20.46
Full Cost for Service			\$216.61

SECTION B - FIRE DEPARTMENT

#	Description	Current Fee/Charge	Unit	Notes
FIRE DEPARTMENT PLAN REVIEW				
0018	Building Plans and Fire Life Safety Plan Review and Inspections	\$190.80 \$97.50	per hour (min. 2 hrs) each	
	Plus Third Party Costs	Actual		
0019	Building/Fire LS Plan Review Resubmittal Plan and Inspections	\$190.80 \$97.50	per hour (min. 1 hr) each	
	Plus Third Party Costs	Actual		
0020	Expedite or Over-the-Counter Plan Check	\$190.80	per hour (min. 1 hr)	
	Plus Third Party Costs	Actual		
0021	As-Built/Revisions Plan Review	\$95.20	per hour (min. 1 hr)	
	Plus Third Party Costs	Actual		
0022	All Fire Protection Plan Review Resubmittals	\$95.20	per hour (min. 1 hr)	
	Plus Third Party Costs	Actual		
0023	Fire Alarm Plan Check, Fire Permit, Inspections	\$299.10 \$97.50	per hour (min. 1 hr) each	
	Plus Per Device (Fire Permit)	\$8.20	per device	
	Plus Third Party Costs	Actual		
0024	Fire Extinguisher Systems, Fire Permit, Inspections	\$299.10 \$97.50	per hour (min. 1 hr) each	
	Plus Per Device (Fire Permit)	\$8.20	per device	
	Plus Third Party Costs	Actual		
0025	Fire Sprinkler System, Fire Permit, Inspections	\$299.10 \$97.50	per hour (min. 1 hr) each	
	Plus Per Head (Fire Permit)	\$8.20	per device	
	Plus Third Party Costs	Actual		
0026	All Additional Plan Check Services, Technical Reports, Alternate Methods of Protection, Appeals, Architectural Design Review, Fire Watch Reports	\$190.80	per hour (min. 1 hr)	
	Plus Third Party Costs and Adm Processing Fee	Actual		
	Expired Plan Review and Fire Permit	\$1.00	of Permit/Plan Review	
0027	Records Management (Storage for Fire Plans)	0.12%	per valuation + 25.4% Admin	
FIRE FEES				
INSPECTIONS (Fee Plus 3rd Party Service Cost)				
<i>State Mandated Inspections</i>				
0028	Apartments	\$125.60	per floor	
0029	High-Rise Occupancy	\$190.80	per floor	
0030	Hotel or Motel Occupancy	\$190.80	per floor	
0031	Hospital Occupancy	\$190.80	per floor	
0032	Private School Occupancy	\$190.80	per inspection	
0033	Public School Occupancy	\$190.80	per inspection	
0034	Other State Mandated Occupancy	\$190.80	per inspection	
0035	State Mandated Pre-Inspection Consultation	\$97.50	per inspection (25 or fewer persons)	
0036	State Mandated Pre-Inspection Consultation	\$117.50	per inspection (26 or more persons)	
0037	Mid-Rise and Multi-Story Structures	\$190.80	per floor	
0038	Miscellaneous Inspections: Reinspection, Investigation, Fire/Code Compliance, Occupancy Final Permit, Fire Watch	\$97.50	per inspection (+ 25.4% Admin)	
0039	Expedite and/or After Hour/Overtime Inspection	\$142.20	per hour (+ 25.4% Admin)	
Code Enforcement:				
0040	Home Occupation Inspection	\$97.50	per inspection	
0041	Code Enforcement Re-inspection	\$97.50	per inspection	

FIRE SAFETY SPECIALIST	FIRE MARSHALL	FIRE PREVENTION PERMIT TECH. I	CODE ENFORCEMENT OFFICER	CODE ENFORCEMENT SENIOR CLERK TYPYST (NON-CONF)	FIRE CAPTAIN	Material/3rd Party Cost	Full Cost
\$66.66	\$118.30	\$63.22	\$63.51	\$86.09	\$184.81		
1.50	1.00	0.50					\$249.90
1.50		0.25					\$115.80
							NA
	1.00	0.50					\$149.90
1.50		0.25					\$115.80
							NA
	1.00	0.50					\$149.90
							NA
	1.00	0.50					\$149.90
							NA
2.75	1.00	0.50					\$333.23
1.50		0.25					\$115.80
0.13		0.02					\$9.94
							NA
2.75	1.00	0.50					\$333.23
1.50		0.25					\$115.80
0.13		0.02					\$9.94
							NA
2.75	1.00	0.50					\$333.23
1.50		0.25					\$115.80
0.13		0.02					\$9.94
							NA
	1.00	0.50					\$149.90
							NA
							NA
							NA
							NA
0.50		0.10	1.50				\$134.93
3.00		0.25					\$215.80
3.00		0.25					\$215.80
3.00		0.25					\$215.80
3.00		0.25					\$215.80
3.00		0.25					\$215.80
3.00		0.25					\$215.80
1.00	0.50	0.25					\$141.62
1.50	0.75	0.25					\$204.52
3.00		0.25					\$215.80
1.50		0.25					\$115.80
	1.50	0.25					\$193.25
			1.50	0.50			\$138.32
			1.25	0.25			\$100.92

SECTION B - FIRE DEPARTMENT

#	Description	Current Fee/Charge	Unit	Notes
	Ambulance Transportation Fee	Per LA County DHS Rates	plus dispatch costs	
0078	Patient Assessment Fee	\$190.00	plus dispatch costs	
0079	Electronic Documentation Fee	\$30.50		
0080	Hazardous Condition and Traffic Collision Recovery Fee	Cost	+ 25.4% Admin	
0081	Document Copy Charge Response Reports	\$8.80	per report	

FIRE	FIRE	FIRE	CODE ENFORCEMENT	CODE ENFORCEMENT	FIRE	Material/3rd Party Cost	Full Cost
FIRE SAFETY SPECIALIST	FIRE MARSHALL	FIRE PREVENTION PERMIT TECH. I	CODE ENFORCEMENT OFFICER	SENIOR CLERK TYPIST (NON-CONF)	FIRE CAPTAIN		
\$66.66	\$118.30	\$63.22	\$63.51	\$86.09	\$184.81		NA
							NA
							NA
							NA
							NA

SECTION C - LIBRARY

#	Description	Current Fee/Charge	Unit
	Damaged/Lost Library Material		
0082	Processing fee for adding replacement copy or accompanying material	\$11.00	
0083	Accompanying Material	\$10.00	
0084	Replace Plastic Jacket	\$2.30	
0086	DVD Case	\$9.75	
0087	CD Case (single)	\$2.30	per case
0088	Bag From Children's Book/CD Set	\$2.30	per bag
0089	Audiobook/CD (multiple)/Hotspot Case	\$5.30	
0091	DVD/CD Cover (Inside Jacket)	\$6.50	
0093	Library Card Replacement	\$3.00	per card
0094	Interlibrary Loan Fees	\$6.00	per request plus charges of lending library
0095	Interlibrary Loan Photocopy	\$6.00	per pageover 20 pages (pages 1-20 free)
0097	Wifi Hotspot	Replacement Cost	
0098	Charging Cable/Laptop Bag/Mouse/Peripheral	Replacement Cost	
0099	Chromebook	Replacement Cost	
0100	Alzheimer's Kit	Replacement Cost	
	Parks Pack	Replacement Cost	
	iPad	New	
	Printing - Black & White	\$0.25	per page
	Printing - Color	\$0.50	per page
	Room Rental		
	Friends Room Rental		
0101	Non-Profit Adult (Based Outside Town)	\$71.60	per hour
0102	Non-Profit Adult (Based In Town)	\$7.60	per hour
0103	Non-Profit Youth Organizations	\$4.30	per hour

LIBRARY	LIBRARY	LIBRARY	LIBRARY	RECREATION & COMMUNITY SERVICES	RECREATION & COMMUNITY SERVICES	RECREATION & COMMUNITY SERVICES	RECREATION & COMMUNITY SERVICES	Material/3rd Party Cost	Full Cost
LIBRARY ASSISTANT (Clerk)	LIBRARY PAGE P/T	LIBRARIAN	LIBRARY TECHNICIAN	RECREATION MANAGER	CIVIL ENGINEERING ASSOCIATE	PROGRAM COORDINATOR	RECREATION LEADER P/T		
\$55.74	\$31.65	\$82.80	\$50.86	\$154.68	\$113.83	\$95.52	\$41.07		
0.33	0.09	0.09	0.09						\$33.27
0.33			0.09						\$22.97
0.33	0.17								\$23.77
0.41									\$22.85
0.41									\$22.85
0.41									\$22.85
0.50									\$27.87
0.09									\$5.02
0.09		0.50	0.09						\$50.99
0.09		0.50	0.09						\$50.99
									NA
									NA
									NA
									NA
									NA
0.02								\$0.10	\$1.03
0.02								\$0.20	\$1.13
				0.25	0.25	1.00	1.00		\$203.71
				0.25	0.25	1.00	1.00		\$203.71
				0.25	0.25	1.00	1.00		\$203.71

SECTION D - RECREATION / COMMUNITY SERVICES

#	Description	Current Fee/Charge	Unit	RECREATION & COMMUNITY SERVICES	RECREATION & COMMUNITY SERVICES	RECREATION & COMMUNITY SERVICES	POLICE	FIRE	HUMAN RESOURCES	PUBLIC WORKS	CITY MANAGER	RECREATION & COMMUNITY SERVICES	RECREATION & COMMUNITY SERVICES	RECREATION & COMMUNITY SERVICES	RECREATION & COMMUNITY SERVICES	Full Cost
				RECREATION LEADER P/T	DIRECTOR OF REC & COMM SVCS	RECREATION MANAGER	POLICE CAPTAIN	MARSHAL L	DIRECTOR OF HR & RISK MGMT	DIRECTOR OF PUBLIC WORKS	ASSISTANT CITY MANAGER	ENGINEERING ASSOCIATE	PROGRAM COORDINATOR	POOL MANAGER P/T	LIFEGUARD P/T	
				\$41.07	\$304.73	\$154.68	\$215.73	\$118.30	\$260.96	\$281.17	\$201.59	\$113.83	\$95.52	\$51.49	\$41.86	
	Athletic Field Rental															
0104	Private Party	\$43.50	per hour/field			0.25						0.25	1.00			\$172.91
0105	Non-Profit Adult (Based Outside Town)	\$21.25	per hour/field			0.25						0.25	1.00			\$172.91
0106	Non-Profit Adult (Based In Town)	\$2.35	per hour/field			0.25						0.25	1.00			\$172.91
0107	Non-Profit Youth Organizations	\$0.30	per hour/field			0.25						0.25	1.00			\$172.91
	Athletic Field Lights															
0108	Private Party	\$4.75	per hour/field									0.25	0.25			\$52.34
0109	Non-Profit Adult (Based Outside Town)	\$2.30	per hour/field									0.25	0.25			\$52.34
0110	Non-Profit Adult (Based In Town)	\$0.30	per hour/field									0.25	0.25			\$52.34
0111	Non-Profit Youth Organizations	\$0.30	per hour/field									0.25	0.25			\$52.34
	Gymnasium Rental															
0112	Private Party	\$122.00	per hour	1.00		0.25						0.25	1.00			\$203.71
0113	Non-Profit Adult (Based Outside Town)	\$61.00	per hour	1.00		0.25						0.25	1.00			\$203.71
0114	Non-Profit Adult (Based In Town)	\$5.80	per hour	1.00		0.25						0.25	1.00			\$203.71
0115	Non-Profit Youth Organizations	\$0.60	per hour	1.00		0.25						0.25	1.00			\$203.71
0116	Staffing/Additional Staffing	\$24.70	per hour	1.00												\$41.07
	Pool Rental															
0117	Private Party	\$152.80	per hour									0.25	1.00	1.00	1.00	\$217.32
0118	Non-Profit Youth Organizations	\$0.90	per hour									0.25	1.00	1.00	1.00	\$217.32
0119	Additional Aquatics Staffing	\$24.70	per hour												1.00	\$41.86
	Langley Center Main Room Rental															
0120	Private Party	\$152.80	per hour	1.00		0.25						0.25	1.00			\$203.71
0121	Non-Profit Adult (Based Outside Town)	\$76.50	per hour	1.00		0.25						0.25	1.00			\$203.71
0122	Non-Profit Adult (Based In Town)	\$8.20	per hour	1.00		0.25						0.25	1.00			\$203.71
0123	Non-Profit Youth Organizations	\$3.50	per hour	1.00		0.25						0.25	1.00			\$203.71
0124	Langley Center Kitchen Facility	\$42.40	per hour	0.50								0.25	0.25			\$72.87
0125	Staffing/Additional Staffing	\$24.70	per hour	1.00												\$41.07
	Barnes Park Memorial Amphitheater															
0126	Private Party	\$152.80	per hour	1.00		0.25						0.25	1.00			\$203.71
0127	Non-Profit Adult (Based Outside Town)	\$76.50	per hour	1.00		0.25						0.25	1.00			\$203.71
0128	Non-Profit Adult (Based In Town)	\$8.20	per hour	1.00		0.25						0.25	1.00			\$203.71
0129	Non-Profit Youth Organizations	\$3.50	per hour	1.00		0.25						0.25	1.00			\$203.71
0130	Staffing/Additional Staffing	\$24.70	per hour	1.00												\$41.07
	Service Club House Rental															
0131	Private Party	\$152.80	per hour	1.00		0.25						0.25	1.00			\$203.71
0132	Non-Profit Adult (Based Outside Town)	\$76.50	per hour	1.00		0.25						0.25	1.00			\$203.71
0133	Non-Profit Adult (Based In Town)	\$8.20	per hour	1.00		0.25						0.25	1.00			\$203.71
0134	Non-Profit Youth Organizations	\$3.50	per hour	1.00		0.25						0.25	1.00			\$203.71
0135	Staffing/Additional Staffing	\$24.70	per hour	1.00												\$41.07
	Other Indoor Facilities (Community Room, Elder, Sierra Vista, etc.)															
0136	Private Party	\$122.00	per hour	1.00		0.25						0.25	1.00			\$203.71
0137	Non-Profit Adult (Based Outside Town)	\$61.00	per hour	1.00		0.25						0.25	1.00			\$203.71
0138	Non-Profit Adult (Based In Town)	\$5.75	per hour	1.00		0.25						0.25	1.00			\$203.71
0139	Non-Profit Youth Organizations	\$2.30	per hour	1.00		0.25						0.25	1.00			\$203.71
0140	Staffing/Additional Staffing	\$24.70	per hour	1.00												\$41.07
0141	Picnic Shelter	\$106.00	per shelter	0.50		0.25						0.50	0.50			\$163.88
0142	Picnic Shelter - Non Resident	\$126.00	per shelter	0.50		0.25						0.50	0.50			\$163.88
0143	Facility Clean-up Deposit (Where Applicable)	\$300-500														NA
	Swim Lessons															
0144	Youth: (1-3 yrs old)	\$36.30	for 5 hours of lessons									0.25	0.25	0.25	0.40	\$81.95
0145	Youth: (4-6 yrs old)	\$36.30	for 5 hours of lessons									0.25	0.25	0.25	0.40	\$81.95
0146	Youth: (7-17 yrs old)	\$36.30	for 5 hours of lessons									0.25	0.25	0.25	0.40	\$81.95
0147	Adult	\$36.90	for 5 hours of lessons									0.25	0.25	0.25	0.40	\$81.95
	Public Swim															
0148	Admission-Youth	\$2.50	2 hour swim											1.50	1.50	\$140.03
0149	Admission-Adult	\$3.50	2 hour swim											1.50	1.50	\$140.03
0150	Admission-Youth Discount Pass (20 Swims)	\$38.00	per pass											30.00	30.00	\$2,800.55
0151	Admission-Adult Discount Pass (20 Swims)	\$56.00	per pass											30.00	30.00	\$2,800.55
0152	Lap Swimming: Per Swim	\$5.25	per swim											2.00	2.00	\$186.70
0153	Lap Swimming: Monthly Pass	\$40.00	per month											60.00	60.00	\$5,601.10
0154	Lap Swimming: Family	\$75.00	per month											60.00	60.00	\$5,601.10
0155	Lap Swimming: Senior	\$27.00	per month											60.00	60.00	\$5,601.10
	Child Care Fees															
0156	After School Care-Resident	\$125.00	per week	15.00								0.25	5.00			\$1,122.07
0157	After School Care-Non Resident	\$133.00	per week	15.00								0.25	5.00			\$1,122.07
0158	All Day & Summer-Resident	\$172.00	per week	50.00								0.25	5.00			\$2,559.50
0159	All Day & Summer-Non Resident	\$180.00	per week	50.00								0.25	5.00			\$2,559.50
0160	Recreation Class & Activity Registration Fee	\$9.70	per registration													NA
0161	Alcohol Consumption Permit Fee	\$115.10					1.00	0.50	0.50	0.50	0.50					\$799.11
	Special Event Permit - Private Party	New					0.50	0.50	0.50	0.50	0.50	1.00				\$805.07

SECTION D - RECREATION / COMMUNITY SERVICES

#	Description	Current Fee/Charge	Unit
	Special Event Permit - Non-profit	New	
	Facility Rental - El Encanto	New	per rental/hour

RECREATION & COMMUNITY SERVICES	RECREATION & COMMUNITY SERVICES	RECREATION & COMMUNITY SERVICES	POLICE	FIRE	HUMAN RESOURCES	PUBLIC WORKS	CITY MANAGER	RECREATION & COMMUNITY SERVICES	RECREATION & COMMUNITY SERVICES	RECREATION & COMMUNITY SERVICES	RECREATION & COMMUNITY SERVICES	Full Cost
RECREATION LEADER P/T	DIRECTOR OF REC & COMM SVCS	RECREATION MANAGER	POLICE CAPTAIN	MARSHAL L	DIRECTOR OF HR & RISK MGMT	DIRECTOR OF PUBLIC WORKS	ASSISTANT CITY MANAGER	ENGINEERING ASSOCIATE	PROGRAM COORDINATOR	POOL MANAGER P/T	LIFEGUARD P/T	
\$41.07	\$304.73	\$154.68	\$215.73	\$118.30	\$260.96	\$281.17	\$201.59	\$113.83	\$95.52	\$51.49	\$41.86	\$805.07
1.00	0.50	0.25	0.50	0.50	0.50	0.50	0.50	1.00	1.00			\$203.71

SECTION E - POLICE DEPARTMENT

#	Description	Current Fee/Charge	Unit	Notes
0162	DUI Processing	\$848.00		
	Emergency Response to DUI Traffic Collision			
0163	DUI Arrest	\$202.00		
0164	DUI Non-Injury	\$939.00		
0165	DUI Minor Injury	\$1,049.00		
0166	DUI Major/Fatal Injury	\$1,528.00		
0167	Vehicle Impound / Storage Release	\$237.00		
0168	Special Handling Administration Charges	\$61.00		
0169	Clearance Letter	\$102.00		
0170	Local Background Check/Recruiters	\$44.00		
0171	CAD Log Searches (address and/or time/date of incidents)	\$31.00	each	
0172	Crime Rate Report (required research redacting, writing)	\$50.00		
0173	Visa/INS Letter CW/ Report	\$103.00	each	
0174	Replace Lost Permit	\$29.00		
0175	Duplicate Citations	\$6.00		
	Animal Services			
	Deceased Small Pet - Picked up by Animal Services Officer	\$60.00	Contracted with LA County	
	Deceased Small Pet - Delivered to Shelter by owner	\$10.00	Dept of Animal Care & Control	
	Deceased Large Pet	\$250.00		
	License: Dogs-one year license (sterilized)	\$20.00		
	License: Cat-one year license (sterilized)	\$5.00		
	License: Dogs-one year license (unsterilized)	\$60.00		
	License: Cat-one year license (unsterilized)	\$10.00		
	License: Dogs-one year license (sterilized) military veterans with disabilities	\$7.50		
	License: Dogs-one year license (sterilized) senior discount	\$7.50		
0176	Residential and Business Alarm Permits	\$58.60		
0177	Verification of Proof of Correction on Traffic Citations	\$23.90		
0178	Fingerprinting	\$32.60		
0179	Prisoner Booking Fees	\$217.00	per Court	
	Sentenced Prisoners			
0180	Housing	\$112.80	per 24 hours	
0181	Per Diem Rate	\$60.80	per 12 hours	
0182	Registration Fee	\$31.50		
0183	Schedule Change Fee	\$59.70		
0184	Booking & Housing of Prisoners on Los Angeles County Sheriffs Warrants and Other Arrests	\$186.60		
0185	Special Details (filming, other events)	\$109.60	per hour per employee	
0186	Concealed Weapons Permit (CCW)	\$283.00		Penal Code 26190
0187	CCW Permit Amendment	\$10.00		Penal Code 26190
0188	CCW Permit Renewal	\$25.00		Penal Code 26190
	Gun and Ammunition Dealers - First Year	New		
	Gun and Ammunition Dealers - Annual Renewal	New		

POLICE LIEUTENANT	POLICE SERGEANT	POLICE POL ADMINISTRATIVE ASSISTANT	POLICE SECRETARY TO POLICE CHIEF	POLICE CHIEF	POLICE CORPORAL - HOURLY RATE	POLICE OFFICER - HOURLY RATE	POLICE SUPERVISOR	POLICE JAILER	POLICE RECORDS CADET P/T	POLICE CLERK	POLICE POL RECORDS MGMT SYSTEMS TECH	POLICE COMMUNITY SERVICE OFFICER	POLICE SENIOR ACCOUNT CLERK	POLICE SENIOR ACCOUNTANT	Material/3rd Party Cost	Full Cost
\$177.85	\$146.06	\$60.40	\$63.78	\$228.79	\$109.16	\$101.24	\$85.61	\$61.38	\$30.41	\$53.90	\$70.79	\$58.08	\$46.12	\$94.74		\$998.83
0.50	1.00				0.50	2.50		6.00		1.50			0.05	0.05		\$875.18
0.50	0.50				0.50	2.00		6.00		1.50			0.05	0.05		\$998.83
0.50	1.00				0.50	2.50		6.00		1.50			0.05	0.05		\$1,104.03
0.50	1.00				1.00	3.00		6.00		1.50			0.05	0.05		\$1,877.40
0.50	3.00				6.00	6.00				1.50			0.05	0.05		\$324.14
0.50	0.50					1.00				1.00			0.05	0.05		\$33.99
										0.50			0.05	0.05		\$60.94
										1.00			0.05	0.05		\$33.99
										0.25	1.00		0.05	0.05		\$60.94
										1.25			0.05	0.05		\$91.30
										0.35			0.05	0.05	\$1.00	\$74.42
										0.25			0.05	0.05		\$26.91
													0.05	0.05		\$20.52
																NA
																NA
																NA
																NA
																NA
												1.00				\$58.08
						0.25				0.25						\$38.78
									0.50							\$15.21
															\$200.00	\$200.00
								0.50	0.50				0.05	0.05		\$80.54
								0.50	0.50				0.05	0.05		\$80.54
								1.00	0.50				0.05	0.05		\$167.81
								0.50	0.00				0.05	0.05		\$49.85
								1.00	1.00				0.05	0.05		\$154.03
						1.00							0.05	0.05		\$116.21
										0.50			0.05	0.05		\$601.36
																NA
																NA
																NA

SECTION F - COMMUNITY DEVELOPMENT DEPARTMENT

#	Description	Current Fee/Charge	Current Unit
	PLANNING		
	Discretionary Zoning Fees		
0189	General Plan Amendment	\$7,884.00	deposit
0197	Code Amendment	\$7,516.00	
0190	Development Agreement/Specific Plan Review	\$20,398.00	deposit
0192	Zone Change (Doesn't include voter enactment)	\$7,147.00	
0193	Modification to Specific Plan	\$7,516.00	
0194	Variance: Single Family Residential	\$1,223.00	
0195	Variance: Other	\$3,061.00	
0202	Tentative Subdivision Map	\$2,915.00	plus per lot/unit fee
	Tentative Subdivision Map - per lot/unit	\$78.00	per lot/unit
0211	Lot Line Adjustment/Lot Merger	\$1,843.00	
0203	Conditional Use Permit: Commercial/SF Residential	\$3,061/\$1223	
0209	Appeal to City Council/Planning Commission	\$1,921.00	
0217	Wireless Telecommunications Facility Permit	\$2,875.00	
	Density Bonus	New	deposit
	Major Development Deposit (MPMC § 21.04)	New	deposit
	Extension of Time (discretionary)	New	
	Voter Enactment	New	
	Public Hearing Fees		
0207	Handling of Radius Map & Mailing	\$115.00	
0232	Publication Fee	\$190.00	per public hearing
	Environmental Fees		
0198	Environmental Impact Report Deposit (In-House Review)	\$9,004.00	
0199	Environmental Impact Report Deposit (Consultant)	Cost +25.4% Admin	
0200	Negative Declaration (In-House Review)	\$2,177.00	
0201	Negative Declaration (Consultant)	Cost +25.4% Admin	
0215	Categorical Exemption	\$253.00	
	City Planner/Ministerial Zoning Fees		
0220	Short Term Rental Permits	\$521.00	
0221	Design Review - New Construction (Less than 25,000 SF)	\$1,410.00	
0222	Design Review - New Construction (Equal or greater than 25,000 SF)	\$1,754.00	
0223	Design Review - New Single Family House	\$500.00	
0224	Design Review - Add. To Single Family House	\$500.00	
0225	Design Review - Non-Residential Remodel (w/o increase in floor area)	\$1,410.00	
0226	Design Review - Master Sign Plan	\$1,410.00	
0205	Site Plan Review	\$1,881.00	
	Design Review - Signs (New)	\$500.00	
	Design Review - Sign (Face Change)	\$57.00	
0219	Parking Study/Parking Joint Use Approval	\$5,000 plus 25.4%	deposit
0227	Administrative Use Permit	\$1,232.00	
0208	Temporary Use Permit	\$646.00	
0196	Minor Modification	\$247.00	
0228	Wireless Telecommunications Facility Permit (City Planner)	\$2,011.00	
0231	Wireless Telecommunications Facility Permit (Small Wireless Facility)	\$1,032.00	
0229	Planning Staff Review/Inspection	\$203.00	per hour
0230	Compliance Review	\$733.00	
0212	Temporary Banner Permit	\$38.00	
0213	Yard Sale Permit	\$19.00	
0214	Landscape Plan Check Fee Deposit	\$1,219.00	deposit
0233	Planning Plan Check Fee - Single-Family Residential/Accessory Dwelling Unit	\$177.00	
0234	Home Occupation Permit	\$160.00	
0218	Zoning Verification Letter/Rebuild Letter	\$270.00	
0191	Recordable Standard Covenants	\$420.00	
0206	Extension of Time (administrative)	\$501.00	
	OTC Administrative Review: Mechanical Equipment (HVAC, Water Tanks); Fence/Walls Review; Building Code Exempt Structures	New	
	Planning Plan Check Fee - Multi-family/Commercial	New	
	Business Application Zoning Clearance	New	
	Prelim Review of Plans (SFD Addition < 2,000 SF)	New	
	Document Review (Covenants, Conditions & Restrictions, Covenants, Agreements)	New	
	Planning Review - New Accessory Dwelling Unit	\$500.00	
	Inclusionary Housing Fee	Cost +25.4% Admin	

Note:

If multiple deposits are required, highest deposit amount shall be collected; deposit account shall be replenished as directed by staff.

PLANNING	PLANNING	PLANNING	PLANNING	PLANNING	FINANCE	POLICE	ENGINEERING	FIRE	POLICE	FIRE	BUILDING AND SAFETY	ECO DEVELOPMENT	ECO DEVELOPMENT	BUILDING AND SAFETY
ASSISTANT PLANNER	SENIOR PLANNER	PLANNING MANAGER	DIR OF COMMUNITY & ECON DEV	PLANNING TECHNICIAN	CASHIER	POLICE CAPTAIN	CIVIL ENGINEERING ASSOCIATE	FIRE MARSHALL	POLICE OFFICER - HOURLY RATE	CODE ENFORCEMENT OFFICER	PERMIT TECHNICIAN I	ECONOMIC DEVELOPMENT PROJ. MGR	ECONOMIC DEVELOPMENT SPECIALIST	BUILDING OFFICIAL
\$61.78	\$93.72	\$117.25	\$206.54	\$45.81	\$34.76	\$215.73	\$135.27	\$118.30	\$101.24	\$59.77	\$58.93	\$129.03	\$100.37	\$111.71
20.00	50.00	15.00	10.00	5.00	0.25									
15.00	30.00	10.00	10.00	5.00	0.25									
20.00	50.00	15.00	10.00	5.00	0.25									
10.00	8.00	3.00	2.00	5.00	0.25		1.00							
25.00	10.00	3.00	2.00	15.00	0.25		2.00	1.00						1.00
20.00	8.00	4.00	2.00	15.00	0.25		5.00	5.00				1.00	1.00	2.00
0.50	1.00	0.50												
3.00	1.00	1.00	0.50	3.00	0.25		15.00	1.00						
25.00	8.00	5.00	2.00	15.00	0.25	2.00	2.00	1.00						
15.00	8.00	6.00	4.00	10.00	0.25									
20.00	10.00	4.00	2.00	10.00	0.25		2.00	1.00						1.00
15.00	10.00	8.00	4.00	10.00	0.25									
1.00	0.50	0.25	0.00	2.00	0.25									
1.00	0.50	0.50	0.25	1.00	0.25									
2.00	1.00	0.50	0.50	2.00	0.25									
5.00	1.00	0.75	0.00	5.00	0.25				0.50	0.25				
25.00	6.00	2.00	1.00	7.00	0.25		2.00	2.00						1.00
40.00	8.00	2.50	2.00	7.00	0.25		4.00	4.00				2.00	2.00	3.00
6.00	2.00	1.00	0.00	2.00	0.25									
5.00	2.00	1.00	0.00	2.00	0.25									
10.00	5.00	2.00	1.00	6.00	0.25									0.75
10.00	5.00	2.00	0.50	10.00	0.25									
7.00	8.00	5.00	2.00	7.00	0.25		2.00	2.00				1.00	1.00	2.00
4.00	1.00	0.50	0.00	4.00	0.25									
1.00	0.00	0.00	0.00	1.00	0.25									
10.00	8.00	2.00	1.00	10.00	0.25	1.00	1.00	1.00				1.00		1.00
5.00	0.50	0.50	0.00	4.00	0.25	0.50	0.50	0.50						
5.00	2.50	1.50	1.00	5.00	0.25									
10.00	8.00	2.00	1.00	10.00	0.25		1.00	1.00						0.50
10.00	5.00	1.00	0.50	8.00	0.25		0.50	0.50						0.50
1.00	1.00	0.50		1.00										
20.00	2.00	1.50	1.00	5.00	0.25	1.00		1.00		1.00				0.50
0.50	0.00	0.00	0.00	0.25	0.25									
0.25	0.00	0.00	0.00	0.25	0.25									
2.00	1.00	0.25	0.00	3.00	0.25									
1.00	0.50	0.00	0.00	1.00	0.25									
3.00	0.50	0.50	0.00	3.00	0.25					1.00	0.50			
2.00	0.50	0.50	0.25	2.00	0.25									
3.00	2.50	2.00	0.50	4.00	0.25									
0.50				1.00										
4.00	3.00	0.50		3.00										
0.50	0.50	0.25		1.00										
1.00	0.25			1.50										
6.00	2.00	1.00	0.00	2.00	0.25									

SECTION G - BUILDING AND SAFETY

#	Description	Current Fee/Charge	Unit	Notes
0240	Certificate of Occupancy: New construction	\$149.00		
0242	Building Reinspection	\$131.00		
0243	Appeal (to Appeal Board)	\$5,907.00	deposit	
	Building Plan Check Fee			
0244	Building Plan Check Fee, when applicable shall be	81.2% of Permit Fee		
	Minimum Building Plan Check Fee	\$284.40		
0247	Plan Check Fee for Plan Revisions (after permit is issued) min 2 hrs	\$147.00	per hour	
0249	Miscellaneous Inspections: Overtime Inspection (per hour) min 2 hrs	\$147.00	per hour	
	Plan Check Extension	New		
	Electrical Permit			
0250	Services 600 Volts or less & (not over 200 Amperes)	\$195.00	each	
0251	Services 600 Volts or less (201 to less than 600 Amperes)	\$222.00	each	
0252	Services 600 Volts or less & (600 or more Amperes)	\$292.00	each	
0253	Services over 600 Volts	\$292.00	each	
0254	Sub-Panel or Switchboard	\$42.00	each	
0255	Temporary Power Pole	\$71.00	each	
	Power Apparatus: Motors, Generators, Transformers, Rectifiers, Synchronous Converters, Capacitors, Air Conditioners, Heat Pumps, Other Electrical Heating Systems, Cooking or baking equipment, each. Rating in Horsepower, Kilowatts or Kilovolt Amperes:			
0256	Up to 1	\$43.00	each	
0257	Over 1 up to 10	\$87.00	each	
0258	Over 11 up to 50	\$176.00	each	
0259	Over 50	\$263.00	each	
0260	Dishwasher, Disposal, Clothes Washer, Clothes Dryer, Bath Fans, Trolley Busways	\$29.00	each	

BUILDING AND SAFETY PERMIT TECHNICIAN II	BUILDING AND SAFETY INSPECTOR	BUILDING AND SAFETY PLAN CHECKER	BUILDING AND SAFETY BUILDING OFFICIAL	Full Cost
\$65.38	\$81.82	\$87.61	\$111.71	
3.00	0.25			\$216.61
0.50	1.25			\$134.97
				NA
effort variable, % estimated based on reasonable experience				NA
1.00		2.00	0.30	\$274.11
0.50		1.25		\$142.20
0.50	1.50			\$155.43
				NA
	2.50			\$204.56
	3.00			\$245.47
	4.00			\$327.30
	4.00			\$327.30
	1.00			\$81.82
	1.00			\$81.82
	1.00			\$81.82
	1.50			\$122.74
	2.00			\$163.65
	2.50			\$204.56
	1.00			\$81.82

SECTION G - BUILDING AND SAFETY

#	Description	Current Fee/Charge	Unit	Notes
0261	Branch Circuits Including Circuit Breakers	\$13.50	each	
0262	Receptacles, Switches, Fixtures, Junction Boxes, Other Outlets	\$5.00	each	
0263	Illuminated Signs, Outline Lighting, Festoon Lighting (each transformer)	\$42.00	each	
0264	Swimming Pools, No Spas	\$58.00	each	
0265	Spa or Swimming Pools with Spas	\$117.00	each	
0266	Electrical Plan Check	81.2% of Electrical Permit		
	Minimum Electrical Plan Check Fee	\$284.40		
	Electric Vehicle Charger	New		
	<u>Plumbing Permit</u>			
0267	Each plumbing fixture including its water supply, trap, and drainage piping: Toilet, Urinal, Tub, Shower, or combination, Mop Sink, Laundry Tray, Kitchen Sink, Bar Sink, Lavatory, Floor Drain, Floor Sink, Dishwasher, Clothes Washer, Drinking Fountain, Rainwater Drains, P-Trap, Water Treatment Equipment	\$29.00	each fixture	
0268	Water Piping, Drain Piping, Vent Piping	\$29.00	each	
0269	Water Supply System, Drainage System, Vent System	\$87.00	each system	
0270	Backflow Preventor or Anti-Siphon Device	\$29.00	each	
0271	Gas Piping, each meter	\$58.00	per meter	
0272	Gas Outlet	\$13.00	each	
0273	Commercial Grease Trap, Commercial Grease Interceptor, Industrial Waste Interceptor, Trailer Park Trap	\$71.00	each	
0274	Sewer Connections & Sewer Extensions	\$58.00	each	
0275	Sewer Caps	\$29.00	each	
0276	Sump Pump Systems, Sewage Ejector Systems	\$71.00	each	
0277	Pool, Spa, or Combination thereof, including trap and Piping	\$117.00	each	

BUILDING AND SAFETY PERMIT TECHNICIAN II	BUILDING AND SAFETY INSPECTOR	BUILDING AND SAFETY PLAN CHECKER	BUILDING AND SAFETY BUILDING OFFICIAL	Full Cost
\$65.38	\$81.82	\$87.61	\$111.71	
	1.00			\$81.82
	0.15			\$12.27
	0.50			\$40.91
	2.00			\$163.65
	2.25			\$184.11
effort variable, % estimated based on reasonable experience				NA
1.00		2.00	0.30	\$274.11
0.50	1.00			\$114.52
	0.50			\$40.91
	1.15			\$94.10
	0.75			\$61.37
	1.00			\$81.82
	0.25			\$20.46
	1.00			\$81.82
	1.00			\$81.82
	0.50			\$40.91
	1.00			\$81.82
	1.50			\$122.74

SECTION G - BUILDING AND SAFETY

#	Description	Current Fee/Charge	Unit	Notes
0278	Water Heater including water piping and vent system	\$64.00	each	
0279	Plumbing Plan Check	81.2% of Plumbing Permit		
	Minimum Plumbing Plan Check Fee	\$284.40		
	<u>Mechanical Permit</u>			
0280	Furnace or Space Heater: Up to 100M BTU	\$58.00	each	
0281	Furnace or Space Heater: Over 100M BTU	\$87.00	each	
	<u>Compressor Boiler:</u>			
0282	Up to 3HP or 100M BTU	\$58.00	each	
0283	Over 3HP or 100M BTU - Up to 15HP or 500M BTU	\$71.00	each	
0284	Over 15HP or 500M BTU - Up to 30HP or 1000M BTU	\$117.00	each	
0285	Over 30HP or 1000M BTU	\$205.00	each	
0286	Absorption Units, Evaporative Coolers	\$71.00	each	
0287	VAV Control Box	\$29.00	each	
0288	Diffusers or Registers	\$7.30	each	
0289	Vent Fan, Residential Hood, Appliance Vents, Duct Alteration	\$42.00	each	
0290	Commercial Hood including Motor & Duct	\$147.00	each	
0291	Metal Fireplace & Chimney, Oil Fired Equipment, Storage Tanks, Dipping Tanks, Appliance or Equipment Not Listed	\$58.00	each	
0293	Mechanical Plan Check	81.2% of Mechanical Permit Fee		
	Minimum Mechanical Plan Check Fee	\$284.40		

BUILDING AND SAFETY PERMIT TECHNICIAN II	BUILDING AND SAFETY INSPECTOR	BUILDING AND SAFETY PLAN CHECKER	BUILDING AND SAFETY BUILDING OFFICIAL	Full Cost
\$65.38	\$81.82	\$87.61	\$111.71	
0.80				\$65.46
effort variable, % estimated based on reasonable experience				NA
1.00		2.00	0.30	\$274.11
	1.00			\$81.82
	1.25			\$102.28
	1.00			\$81.82
	1.00			\$81.82
	1.50			\$122.74
	2.50			\$204.56
	1.00			\$81.82
	0.50			\$40.91
	0.15			\$12.27
	0.50			\$40.91
	2.00			\$163.65
	1.00			\$81.82
effort variable, % estimated based on reasonable experience				NA
1.00		2.00	0.30	\$274.11

SECTION G - BUILDING AND SAFETY

#	Description	Current Fee/Charge	Unit	Notes
0339	\$90,000	\$2,051.00		
0340	\$95,000	\$2,122.00		
0341	\$100,000	\$2,197.00		
0342	Each \$1,000 valuation over \$100,000	\$13.00		
0245	<u>Energy Plan Check - Building Valuation</u>			
	\$1,000	\$101.00	per 1K sq ft	
	\$1,500	\$101.00	per 1K sq ft	
	\$2,000	\$101.00	per 1K sq ft	
	\$2,500	\$101.00	per 1K sq ft	
	\$3,000	\$101.00	per 1K sq ft	
	\$3,500	\$101.00	per 1K sq ft	
	\$4,000	\$101.00	per 1K sq ft	
	\$5,000	\$101.00	per 1K sq ft	
	\$6,000	\$101.00	per 1K sq ft	
	\$7,000	\$101.00	per 1K sq ft	
	\$8,000	\$101.00	per 1K sq ft	
	\$9,000	\$101.00	per 1K sq ft	
	\$10,000	\$101.00	per 1K sq ft	
	\$12,000	\$101.00	per 1K sq ft	
	\$14,000	\$101.00	per 1K sq ft	
	\$16,000	\$101.00	per 1K sq ft	
	\$18,000	\$101.00	per 1K sq ft	
	\$20,000	\$101.00	per 1K sq ft	
	\$22,000	\$101.00	per 1K sq ft	
	\$24,000	\$101.00	per 1K sq ft	
	\$26,000	\$101.00	per 1K sq ft	
	\$28,000	\$101.00	per 1K sq ft	
	\$30,000	\$101.00	per 1K sq ft	
	\$32,000	\$101.00	per 1K sq ft	
	\$34,000	\$101.00	per 1K sq ft	
	\$36,000	\$101.00	per 1K sq ft	
	\$38,000	\$101.00	per 1K sq ft	
	\$40,000	\$101.00	per 1K sq ft	
	\$42,000	\$101.00	per 1K sq ft	
	\$44,000	\$101.00	per 1K sq ft	
	\$46,000	\$101.00	per 1K sq ft	
	\$48,000	\$101.00	per 1K sq ft	
	\$50,000	\$101.00	per 1K sq ft	
	\$55,000	\$101.00	per 1K sq ft	
	\$60,000	\$101.00	per 1K sq ft	
	\$65,000	\$101.00	per 1K sq ft	

BUILDING AND SAFETY PERMIT TECHNICIAN II	BUILDING AND SAFETY INSPECTOR	BUILDING AND SAFETY PLAN CHECKER	BUILDING AND SAFETY BUILDING OFFICIAL	Full Cost
\$65.38	\$81.82	\$87.61	\$111.71	NA
				NA
				NA
				NA
		0.11		\$9.50
		0.16		\$14.03
		0.22		\$19.00
		0.25		\$22.24
		0.29		\$25.26
		0.33		\$28.50
		0.36		\$31.52
		0.40		\$34.76
		0.43		\$37.89
		0.47		\$41.13
		0.51		\$44.26
		0.54		\$47.60
		0.58		\$50.62
		0.63		\$55.48
		0.69		\$60.23
		0.74		\$64.66
		0.79		\$69.51
		0.85		\$74.26
		0.90		\$79.12
		0.96		\$83.98
		1.01		\$88.62
		1.06		\$93.26
		1.12		\$98.23
		1.17		\$102.65
		1.22		\$107.29
		1.28		\$112.47
		1.34		\$117.01
		1.39		\$121.87
		1.44		\$126.29
		1.50		\$131.15
		1.55		\$136.01
		1.60		\$140.54
		1.66		\$145.51
		1.77		\$154.90
		1.88		\$164.39
		1.99		\$174.11

SECTION G - BUILDING AND SAFETY

#	Description	Current Fee/Charge	Unit	Notes
	\$70,000	\$101.00	per 1K sq ft	
	\$75,000	\$101.00	per 1K sq ft	
	\$80,000	\$101.00	per 1K sq ft	
	\$85,000	\$101.00	per 1K sq ft	
	\$90,000	\$101.00	per 1K sq ft	
	\$95,000	\$101.00	per 1K sq ft	
	\$100,000	\$101.00	per 1K sq ft	
	Each \$1,000 valuation over \$100,000	\$101.00	per 1K sq ft	
0246	<u>Accessibility Plan Check - Building Valuation</u>			
	\$1,000	\$101.00	per 1K sq ft	
	\$1,500	\$101.00	per 1K sq ft	
	\$2,000	\$101.00	per 1K sq ft	
	\$2,500	\$101.00	per 1K sq ft	
	\$3,000	\$101.00	per 1K sq ft	
	\$3,500	\$101.00	per 1K sq ft	
	\$4,000	\$101.00	per 1K sq ft	
	\$5,000	\$101.00	per 1K sq ft	
	\$6,000	\$101.00	per 1K sq ft	
	\$7,000	\$101.00	per 1K sq ft	
	\$8,000	\$101.00	per 1K sq ft	
	\$9,000	\$101.00	per 1K sq ft	
	\$10,000	\$101.00	per 1K sq ft	
	\$12,000	\$101.00	per 1K sq ft	
	\$14,000	\$101.00	per 1K sq ft	
	\$16,000	\$101.00	per 1K sq ft	
	\$18,000	\$101.00	per 1K sq ft	
	\$20,000	\$101.00	per 1K sq ft	
	\$22,000	\$101.00	per 1K sq ft	
	\$24,000	\$101.00	per 1K sq ft	
	\$26,000	\$101.00	per 1K sq ft	
	\$28,000	\$101.00	per 1K sq ft	
	\$30,000	\$101.00	per 1K sq ft	
	\$32,000	\$101.00	per 1K sq ft	
	\$34,000	\$101.00	per 1K sq ft	
	\$36,000	\$101.00	per 1K sq ft	
	\$38,000	\$101.00	per 1K sq ft	
	\$40,000	\$101.00	per 1K sq ft	
	\$42,000	\$101.00	per 1K sq ft	
	\$44,000	\$101.00	per 1K sq ft	
	\$46,000	\$101.00	per 1K sq ft	
	\$48,000	\$101.00	per 1K sq ft	

BUILDING AND SAFETY PERMIT TECHNICIAN II	BUILDING AND SAFETY INSPECTOR	BUILDING AND SAFETY PLAN CHECKER	BUILDING AND SAFETY BUILDING OFFICIAL	Full Cost
\$65.38	\$81.82	\$87.61	\$111.71	
		2.09		\$183.50
		2.20		\$192.89
		2.31		\$202.39
		2.42		\$211.89
		2.53		\$221.39
		2.61		\$229.05
		2.71		\$237.15
		0.02		\$1.40
		0.05		\$4.70
		0.08		\$7.00
		0.11		\$9.45
		0.13		\$11.10
		0.14		\$12.60
		0.16		\$14.20
		0.18		\$15.75
		0.20		\$17.35
		0.22		\$18.90
		0.23		\$20.55
		0.25		\$22.10
		0.27		\$23.80
		0.29		\$25.30
		0.32		\$27.70
		0.34		\$30.10
		0.37		\$32.30
		0.40		\$34.75
		0.42		\$37.10
		0.45		\$39.55
		0.48		\$41.95
		0.51		\$44.30
		0.53		\$46.60
		0.56		\$49.10
		0.59		\$51.30
		0.61		\$53.60
		0.64		\$56.20
		0.67		\$58.50
		0.70		\$60.90
		0.72		\$63.10
		0.75		\$65.55
		0.78		\$68.00
		0.80		\$70.25

SECTION G - BUILDING AND SAFETY

#	Description	Current Fee/Charge	Unit	Notes
	\$50,000	\$101.00	per 1K sq ft	
	\$55,000	\$101.00	per 1K sq ft	
	\$60,000	\$101.00	per 1K sq ft	
	\$65,000	\$101.00	per 1K sq ft	
	\$70,000	\$101.00	per 1K sq ft	
	\$75,000	\$101.00	per 1K sq ft	
	\$80,000	\$101.00	per 1K sq ft	
	\$85,000	\$101.00	per 1K sq ft	
	\$90,000	\$101.00	per 1K sq ft	
	\$95,000	\$101.00	per 1K sq ft	
	\$100,000	\$101.00	per 1K sq ft	
	Each \$1,000 valuation over \$100,000	\$101.00	per 1K sq ft	

BUILDING AND SAFETY PERMIT TECHNICIAN II	BUILDING AND SAFETY INSPECTOR	BUILDING AND SAFETY PLAN CHECKER	BUILDING AND SAFETY BUILDING OFFICIAL	Full Cost
\$65.38	\$81.82	\$87.61	\$111.71	
		0.83		\$72.75
		0.88		\$77.45
		0.94		\$82.20
		0.99		\$87.05
		1.05		\$91.75
		1.10		\$96.45
		1.15		\$101.15
		1.21		\$105.89
		1.26		\$110.64
		1.31		\$114.49
		1.35		\$118.54
		0.01		\$0.70

SECTION H - PUBLIC WORKS

#	Description	Current Fee/Charge	Unit
0346	Address Change/Additional Address (Residential)	\$947.20	each
	Address Change/Additional Address (ADU)	\$947.20	each
0347	Banner Permit	\$325.50	each
0351	Encroachment Permit & Inspection Fee (Concrete, Trash Bin, Excavation, Sewer House Connection, Sewer Reconstruction)	\$463.30	each
0351	Encroachment Permit & Inspection Fee (Food Trucks	\$463.30	each
	Geology/Geotechnical Review		
0355	Deposit for geology/geotechnical review	\$4,276.00	Initial Review + 25.4% Admin
	Grading		
	Grading Inspection Fee >1,000 acre	New	per hour
	Grading Inspection Fee <1,000 acre	New	per hour
	Grading Plan Check Fee	New	
0365	Plan Check Fee-Provided by Consultants	Cost	+ 25.4% Admin
	National Pollutant Discharge Elimination System (NPDES)		
0366	Consultant Cost	\$2,139.00	Initial Review or 25.4% Admin Fee
0367	City Administrative Services	\$917.00	Min \$916.05 or 25.4% of Review Cost
0368	Housemoving Permit Fee	\$564.00	per document
0369	Newsrack Permit Fee	\$253.00	per newsrack per year
0370	Parcel Merge by Document	\$1,569.00	per document
0371	Building Permit Plan Check Fee (Engineering)	\$221.00	per hour
0371	Building Permit Plan Check Fee (Engineering) ADU	\$221.00	per hour
0372	Public Works Improvement Plan Check - Single Family	\$221.00	per hour
	Public Works Improvement Plan Check - Multi-Family	\$221.00	per hour
	Public Works Improvement Plan Check - Residential Tract	\$221.00	per hour
	Public Works Improvement Plan Check - Commercial	\$221.00	per hour
0373	Public Works Plan Check-Provided by Consultants	Cost	+ 25.4% Admin
0374	Public Works Improvement Inspection - Single Family	\$177.00	per hour
	Public Works Improvement Inspection - Multi-Family	\$177.00	per hour
	Public Works Improvement Inspection - Residential Tract	\$177.00	per hour
	Public Works Improvement Inspection - Commercial	\$177.00	per hour
0375	Public Works Inspection-Provided by Consultants	Cost	+ 25.4% Admin
0377	Sewer House Connection Permit Fee (Outside City Limits)	\$978.00	each connection
0379	Subdivision Map, Parcel Map, and Monument City Admin Fee	Map Checking \$1,561.00	
	Consultant Charges	plus \$7,503.50 or 70% of L.A. County fee schedule	
0383	Subdivision CCR (Review By City Attorney)		
	City Admin Fee	+ 25.4% Admin	
	Consultant Charges	Cost	
0384	Waste and Recycling Collection Permit Application	\$591.00	per application
0385	Transportation Permit Fee (Vehicle Code Section 35795)	\$17.00	per permit (Single Trip)

PUBLIC WORKS	PUBLIC WORKS	PUBLIC WORKS	FIRE	POLICE	PUBLIC WORKS	PUBLIC WORKS	PUBLIC WORKS	PUBLIC WORKS	PUBLIC WORKS	PUBLIC WORKS	CODE ENFORCEMENT	PUBLIC WORKS	PUBLIC WORKS	POLICE	PUBLIC WORKS	PUBLIC WORKS	Material/3rd Party Cost	Full Cost
CIVIL ENGINEER TECHNICIAN	CIVIL ENGINEERING ASSOCIATE	ADMINISTRATIVE SECRETARY	PERMIT TECHNICIAN I	POLICE CLERK	SENIOR MAINTENANCE WORKER	CREW LEADER	CROSS CONNECTION CONTROL INSP.	PW Inspector	Engineering Manager	PRINCIPAL MANAGEMENT ANALYST	CODE ENFORCEMENT OFFICER	WATER UTILITY MAINT WKR	WATER DISTRIBUTION CREW SUPER.	COMMUNITY SERVICE OFFICER	CONSUMER SERVICE REPR.	WATER DISTRIBUTION LEAD WORKER		
\$91.86	\$105.03	\$78.38	\$63.22	\$53.90	\$113.80	\$84.86	\$117.45	\$198.31	\$345.63	\$109.21	\$63.51	\$59.50	\$99.99	\$58.08	\$80.25	\$86.28		\$432.29
1.00	0.25	0.50	0.25	0.25	1.50												\$75.00	\$616.10
1.00	2.00	0.50	0.25	0.25	1.50												\$75.00	\$1,764.69
1.00					6.00												\$990.00	\$488.48
1.00								2.00										\$580.34
2.00								2.00										NA
																		NA
																		\$198.31
								1.00										\$198.31
								1.00										\$888.12
0.50	6.00	0.50							0.50									NA
																		NA
																		NA
																		NA
																		\$303.13
0.75			2.00	2.00														\$303.13
0.75			2.00	2.00														\$210.06
									2.00									\$353.65
									2.00									\$529.83
									1.00	0.50								\$444.97
									1.00	2.00								\$889.93
											4.00							\$889.93
											4.00							\$1,334.90
											6.00							NA
																		NA
																		NA
																		\$297.47
																		\$99.16
																		\$2,974.68
																		\$198.31
																		NA
																		NA
																		\$420.12
																		NA
																		NA
																		NA
																		\$364.58
																		NA

SECTION H - PUBLIC WORKS

#	Description	Current Fee/Charge	Unit
		\$98.00	per permit (Annual Trip)
0386	Traffic Engineering Plan Check Fee		
	City Admin Fee	+ 25.4% Admin	
	Consultant Charges	Cost	
0387	Public Works Water Division Plan Check	\$221.00	per hour
0388	Public Works Water Division Inspection	\$177.00	per hour
0389	During Extreme Weather, Plastic Sheeting after the First Roll	\$120.90	Additional Rolls
	Street Vendor Fee (Peddler)	New	
	Water Service Installation	New	Deposit
	Backflow Annual Inspection & Compliance	New	
	Construction Meter Fee	New	Deposit
	Permit Parking Review	New	each
	Meter Testing 3/4" - 1"	New	each
	Meter Testing 1.5" - 2"	New	each
	Meter Testing 3" or larger	New	each
	Fire Hydrant Flow Test	\$403.00	each

PUBLIC WORKS	PUBLIC WORKS	PUBLIC WORKS	FIRE	POLICE	PUBLIC WORKS	PUBLIC WORKS	PUBLIC WORKS	PUBLIC WORKS	PUBLIC WORKS	PUBLIC WORKS	CODE ENFORCEMENT	PUBLIC WORKS	PUBLIC WORKS	POLICE	PUBLIC WORKS	PUBLIC WORKS	Material/3rd Party Cost	Full Cost
CIVIL ENGINEER TECHNICIAN	CIVIL ENGINEERING ASSOCIATE	ADMINISTRATIVE SECRETARY	PERMIT TECHNICIAN I	POLICE CLERK	SENIOR MAINTENANCE WORKER	CREW LEADER	CROSS CONNECTION CONTROL INSP.	PW Inspector	Engineering Manager	PRINCIPAL MANAGEMENT ANALYST	CODE ENFORCEMENT OFFICER	WATER UTILITY MAINT WKR	WATER DISTRIBUTION CREW SUPER.	COMMUNITY SERVICE OFFICER	CONSUMER SERVICE REPR.	WATER DISTRIBUTION LEAD WORKER		
\$91.86	\$105.03	\$78.38	\$63.22	\$53.90	\$113.80	\$84.86	\$117.45	\$198.31	\$345.63	\$109.21	\$63.51	\$59.50	\$99.99	\$58.08	\$80.25	\$86.28		NA
	2.00																	\$210.06
							1.00											NA
							1.00											\$117.45
					0.16												\$110.00	\$117.45
1.00										1.00		1.00						\$128.65
																		\$255.37
							1.00											NA
																		\$117.45
								2.00										\$234.90
8.00				1.00					5.00					7.00				\$2,923.46
															2.00		\$65.00	\$225.50
															2.00		\$125.00	\$285.50
															2.00		\$245.00	\$405.50
												2.00				2.00	\$98.24	\$389.81



27368 Via Industria, Suite 200
Temecula, California 92590-4856
800.755.6864 | Fax: 888.326.6864
951.587.3500 | Fax: 951.587.3510
www.willdan.com