



- * Raceway depth, if used
- * Identify trim caps, including colors and materials
- * Method of Installation

Section 21.50.030 of the Monterey Park Municipal Code requires that sign plans include a plot plan of the site, elevations of buildings, a detailed sign copy, proposed color selections and lighting details. Plans shall be fully dimensioned and drawn to scale.

PLANNING DIVISION

320 West Newmark Avenue Monterey Park CA 91754 (626) 307-1315

SUBMISSION REQUIREMENTS FOR SIGNS

1. ELEVATION

(Must be to scale)

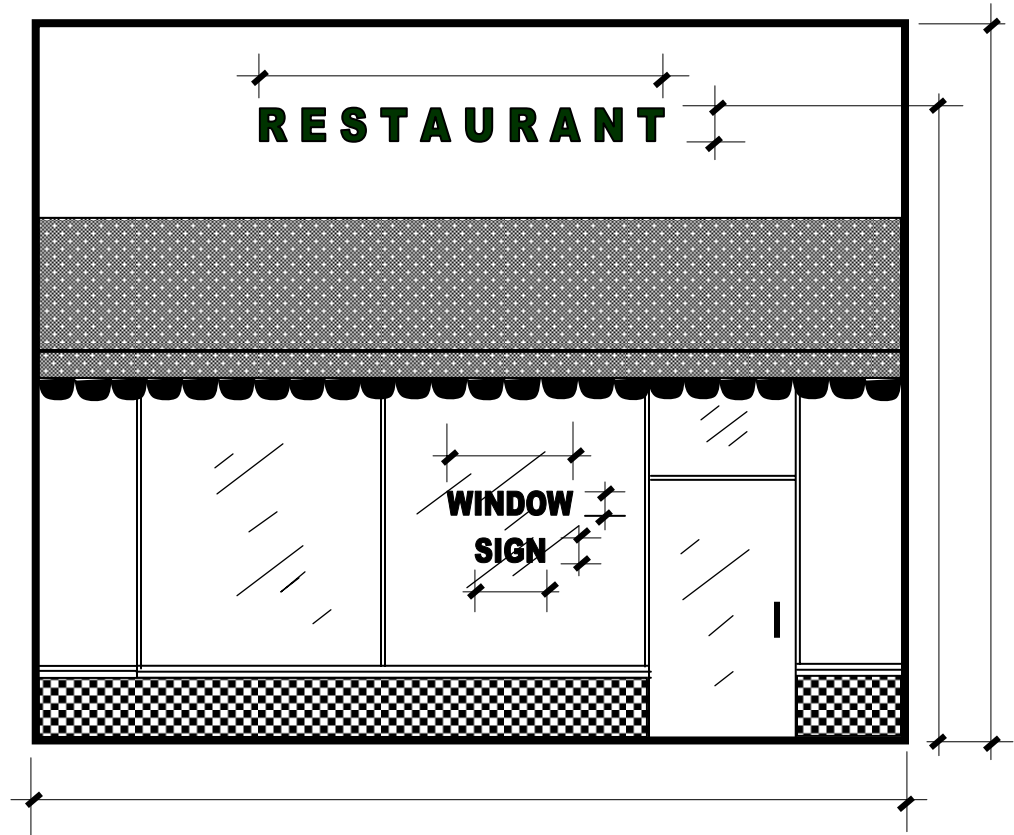
- * Store front width
 - * Bldg. Height
 - * Sign Height
- from finished ground to top of sign
- * Sign dimensions
 - * Sign square footage
 - * Indicate proposed colors and materials

2. VICINITY MAP/ SITE PLAN

- * Street name and closest Cross street
- * Bldg. location
- * Sign location
- * North arrow

3. CROSS SECTION

- * Letter return depth (or existing sign can depth)



1. ELEVATION (Must be to Scale and in Color)

WALL SIGN REQUIREMENTS:

* Primary Elevation
(street frontage or
fronting a parking
lot): 75% of building
frontage

* Secondary
Elevation: 50% of
building frontage

* Sign Height: 15'
Maximum from
finished ground to
top of sign

* Signs may not
project more than
12" from face of
building wall

* Can Signs (Box
Signs) are not
permitted unless
architecturally
recessed into
building wall

* No roof signs or
painted signs are
permitted

* Signs may also be
subject to Specific
Plan requirements.
Please check with
the Planning
Division for
details.

Freestanding Sign Monument Sign / Requirements

* **Number:** One (1) sign permitted per lot (lots with continuous street frontage of more than 600', may have one additional sign).

* **Area and Height:**

a) lots with < 300' street front: 7' Max. height and 56 S.F. Max area.

b) lots with >300' street front: 20' Max. height and 120 S.F. Max. area.

c) Sign height, in no event, shall be higher than the building roof or building parapet closest to the sign.

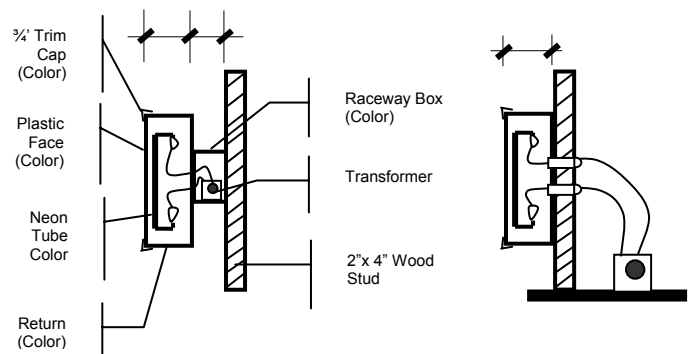
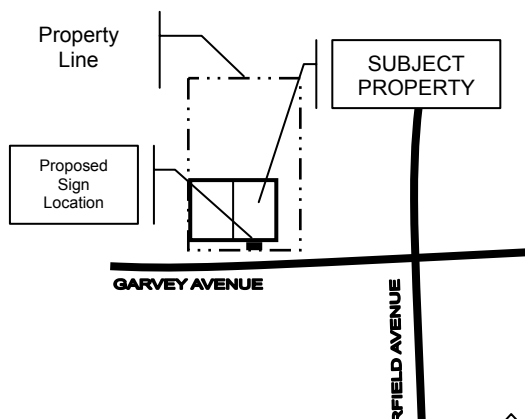
* **Projections:** No freestanding sign shall project beyond the property line. No sign shall project over a parking lot or driveway with less than 14' of ground clearance or over a pedestrian walkway with less than 8' clearance.

* **Location:** 10' Min. from common lot line and min. 25' separation between signs.

* **Landscaping:** All monument sign bases shall be landscaped with flowering ground cover and automatic irrigation system.

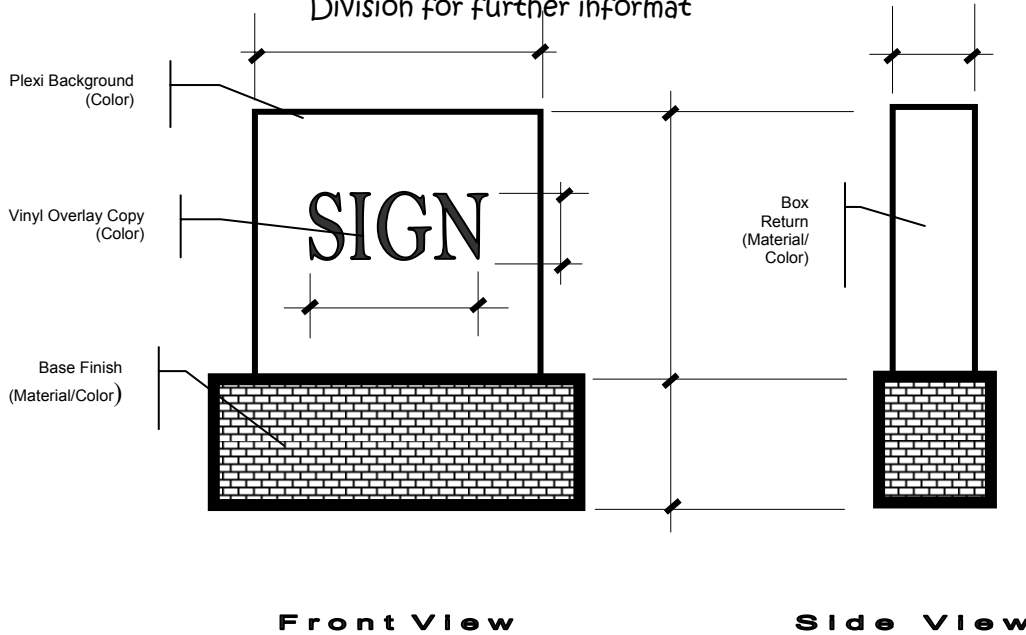
Note: Signs may be subject to Specific Plan Requirements. Consult with the Planning Division for further details.

**PLEASE SEE
REVERSE FOR
ADDITIONAL
INFORMATION**



FREE-STANDING/MONUMENT SIGNS

This handout provides general information only. Please contact the Planning Division for further informat



Front View

Side View

WINDOW

SIGNS *see Diagram at Front Page Elevation

The total area allowed for window signs shall not exceed 25% of the total window area nor that of any one window and shall be placed inside the building store front. Allowed window signs shall be permitted only on windows located on the elevation of the primary entrance of the business on second or succeeding floors. All window signs shall present a professionally made and well maintained appearance.

